

PROJE ELİK EV

ÖZEL KONSEPT

Çelik Villa Projelerimiz

SPECIAL CONCEPT

Steel Villa Projects

XÜSUSİ KONSEPT

Dəmir Villa Layihələrimiz

НАШИ СПЕЦИАЛЬНЫЕ

КОНЦЕПТУАЛЬНЫЕ ПРОЕКТЫ

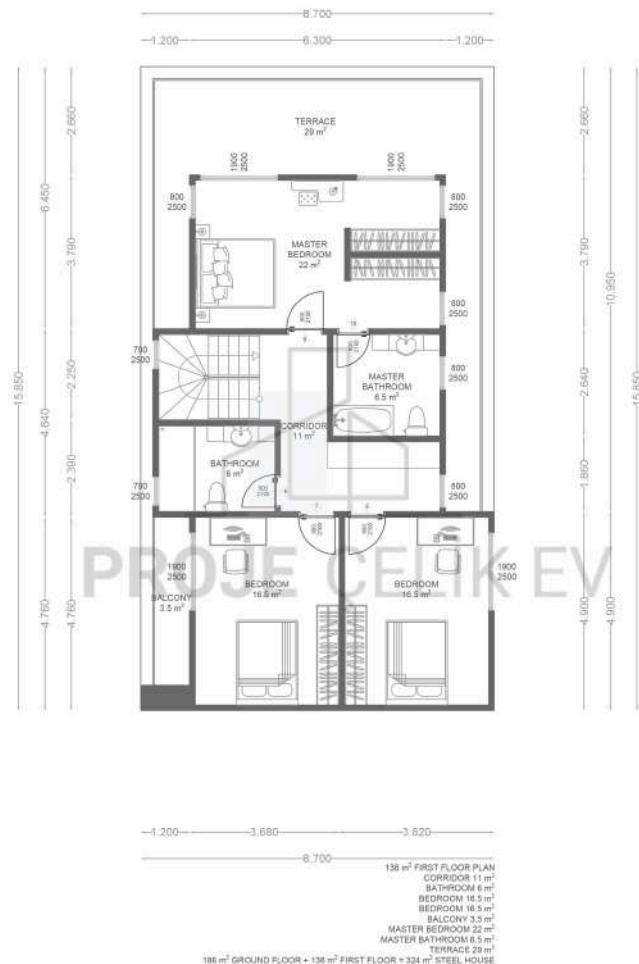
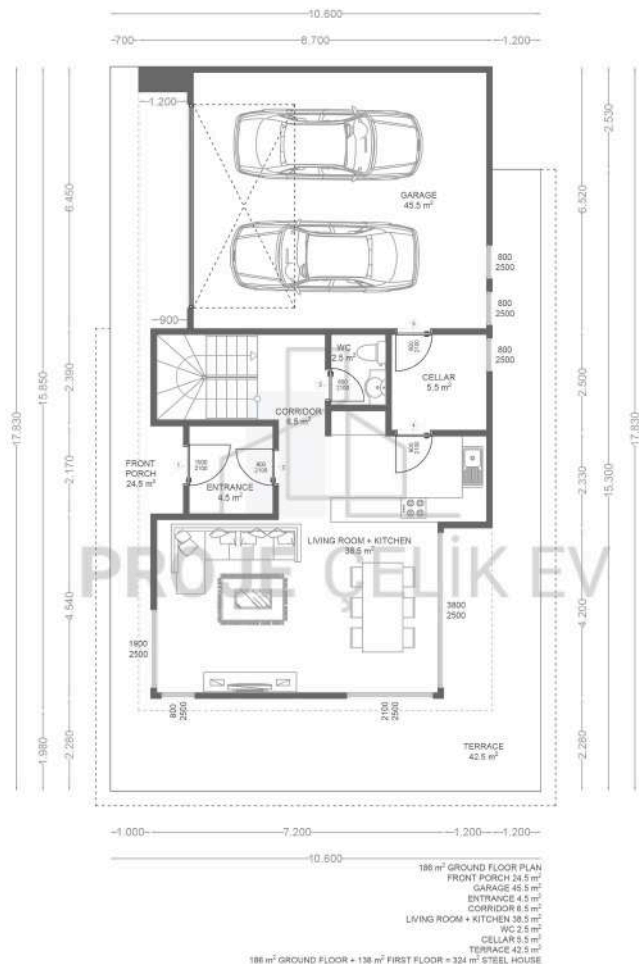
СТАЛЬНЫХ ВИЛЛ"

AKDAMAR



02

324 m² Special Concept
Steel Villa Projects



SEDİR



04

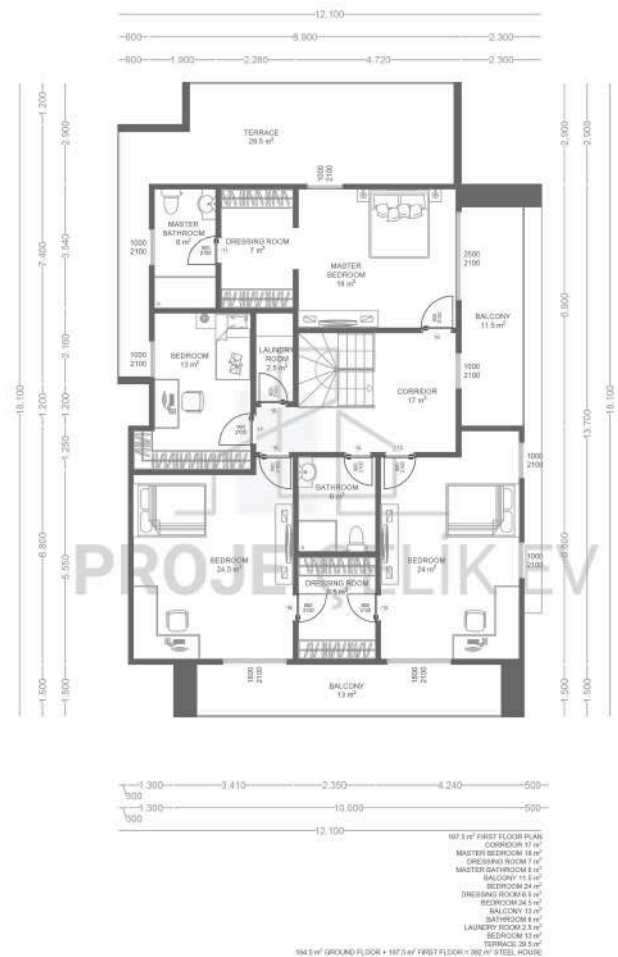
351 m² Special Concept
Steel Villa Projects

CUNDA



06

392 m² Special Concept
Steel Villa Projects

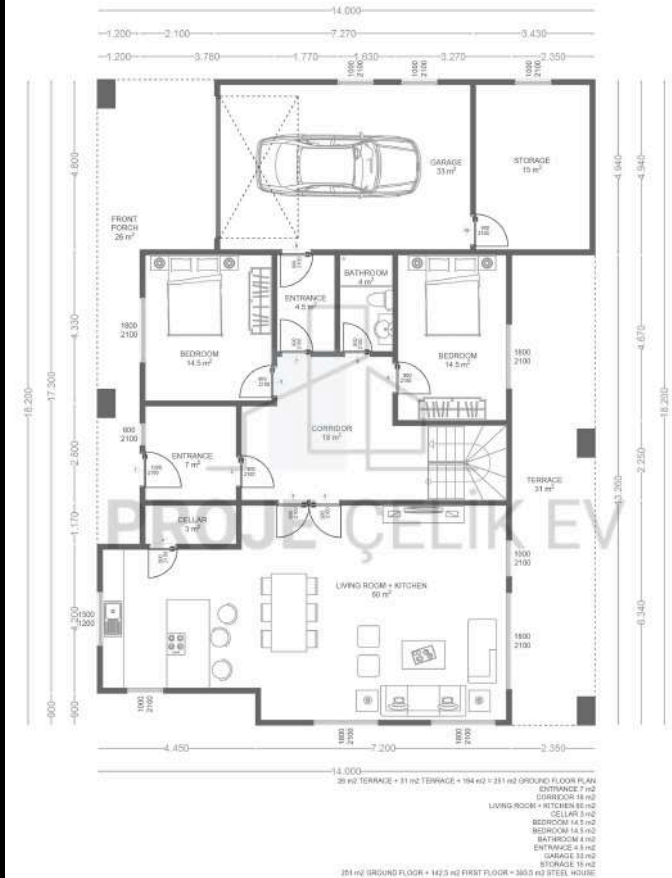


AVŞA



08

393.5 m² Special Concept
Steel Villa Projects



KINALIADA



10

503 m² Special Concept
Steel Villa Projects



BOZCAADA



12

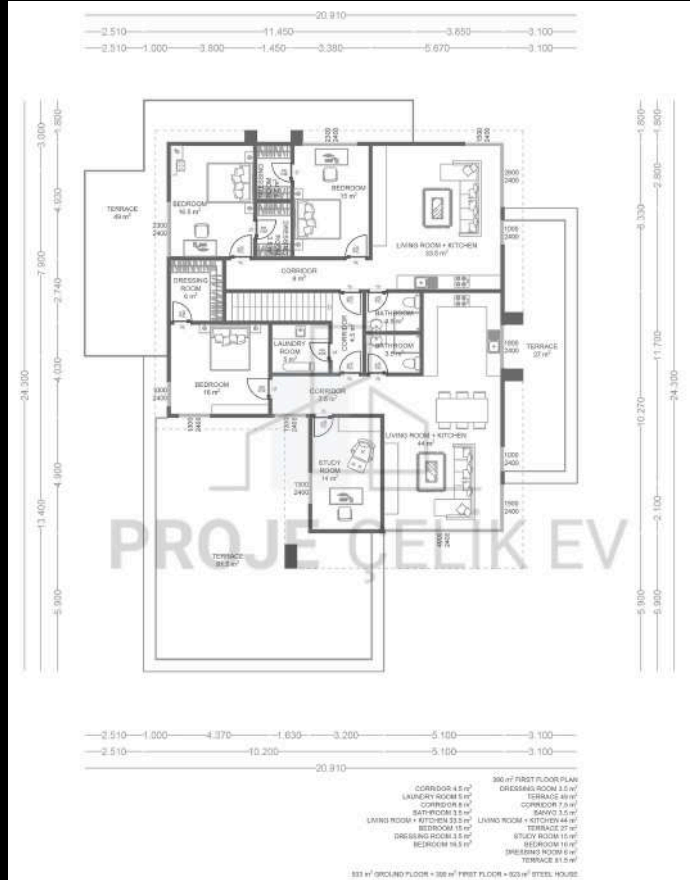
513 m² Special Concept
Steel Villa Projects

GÖKÇEADA



14

923 m² Special Concept
Steel Villa Projects



**ÇELİK BUNGALOV VE
KAPSÜL**

Projelerimiz

**STEEL BUNGALOW AND
CAPSULE**
Projects

ÇELİK BUNGALOV VE KAPSÜL
Layihələrımız

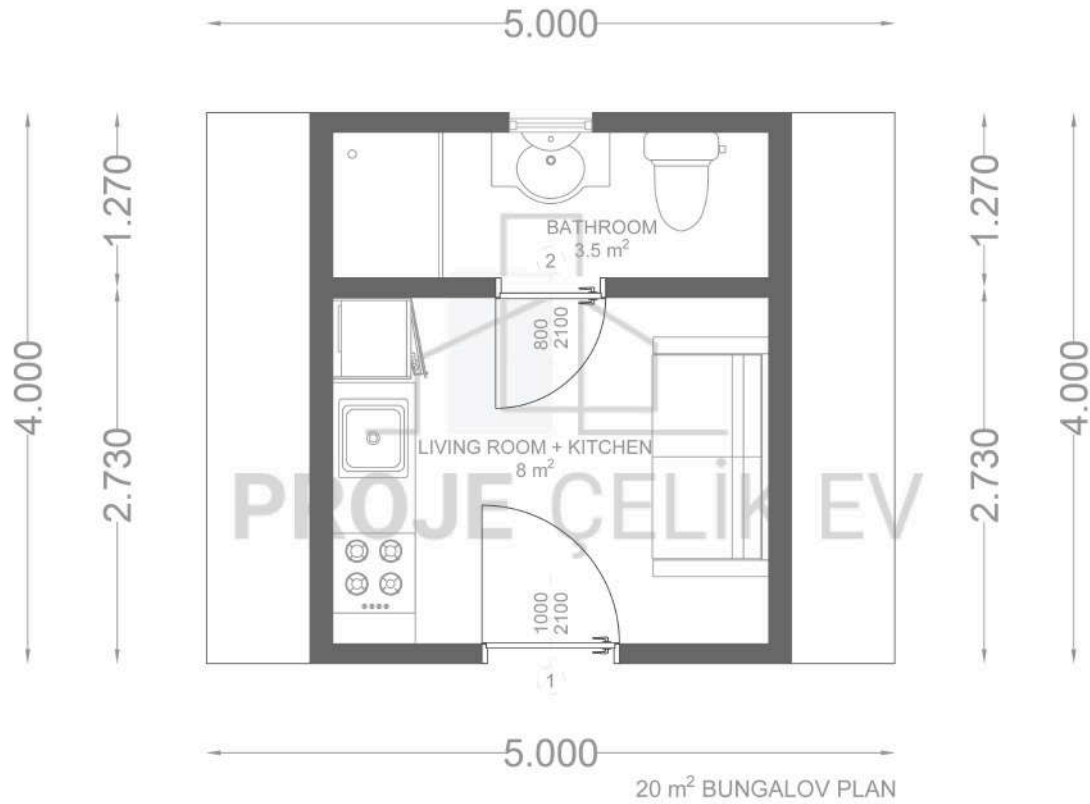
НАШИ ПРОЕКТЫ СТАЛЬНЫХ
БУНГАЛО И КАПСУЛ

AYDER



18

20 m² Steel Bungalow Projects

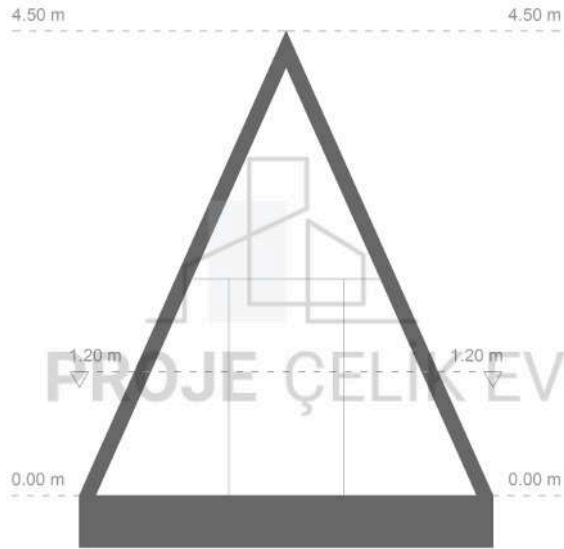


ELEVİT

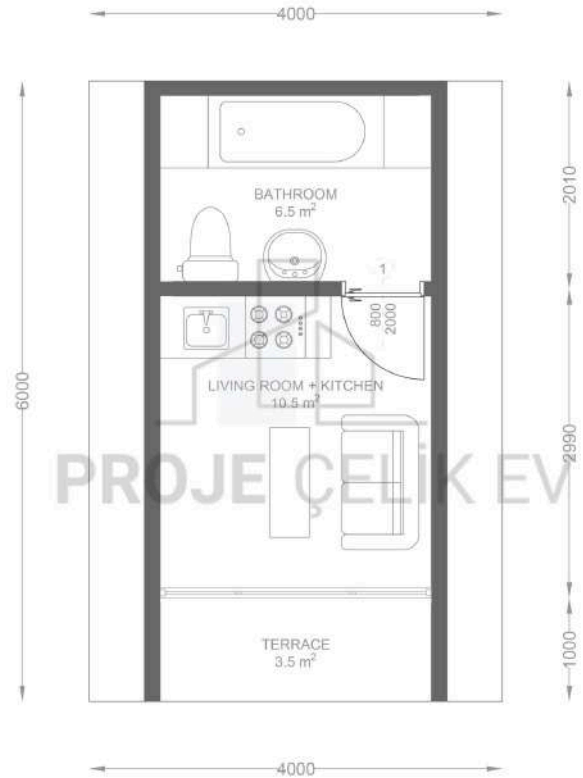


20

24 m² Steel Bungalow Projects



FRONT ELEVATION



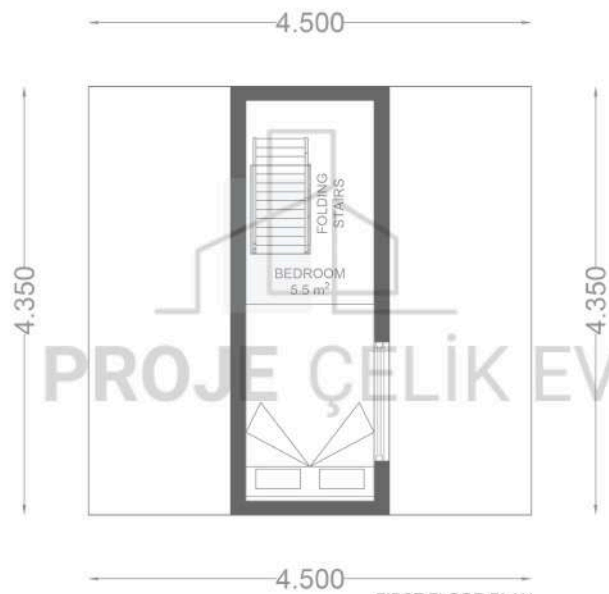
20 m² + 4 m² TERRACE = 24 m² BUNGALOV

PALOVIT

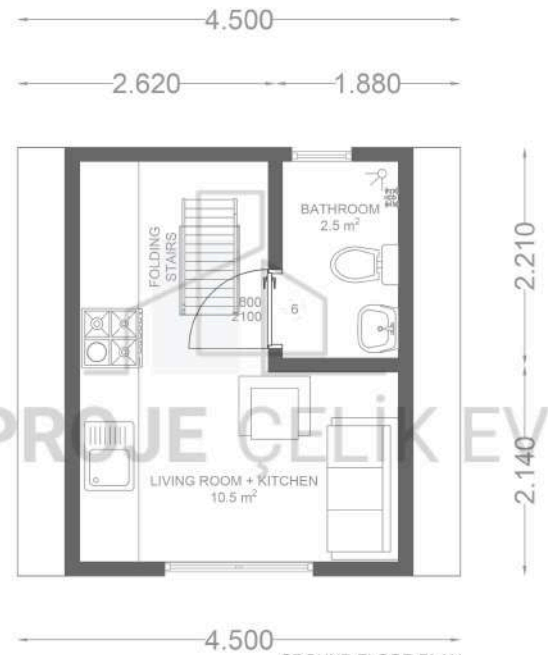


22

29 m² Steel Bungalow Projects



FIRST FLOOR PLAN
19.5 m² GROUND FLOOR + 9.5 m² FIRST FLOOR = 29 m² BUNGALOV



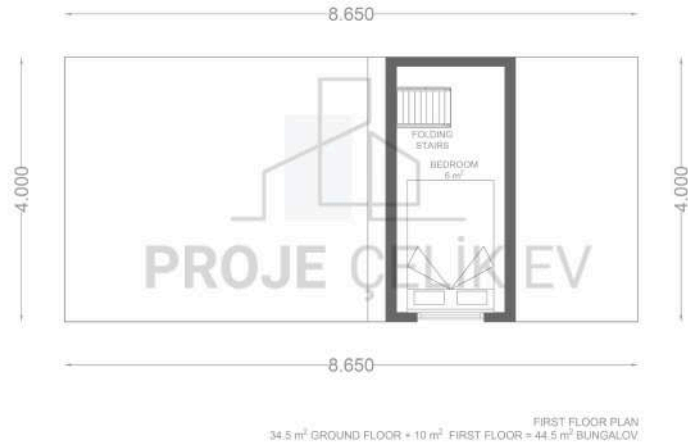
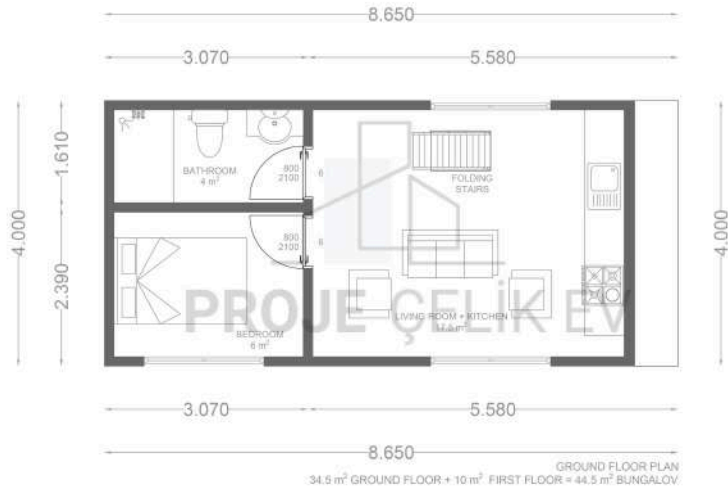
GROUND FLOOR PLAN
19.5 m² GROUND FLOOR + 9.5 m² FIRST FLOOR = 29 m² BUNGALOV

SAMİSTAL



24

44.5 m² Steel Bungalow Projects

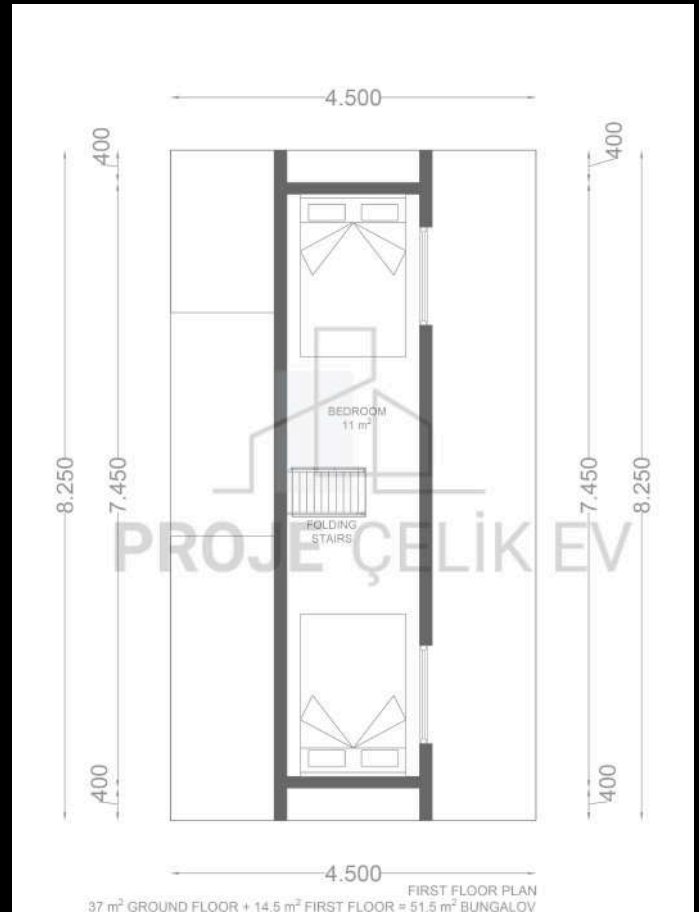


ovit



26

51.5 m² Steel Bungalow Projects

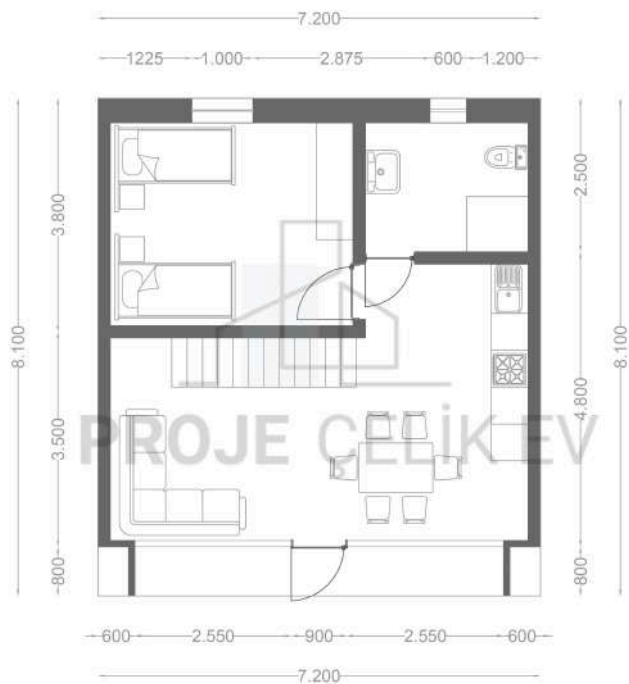


HANDÜZÜ

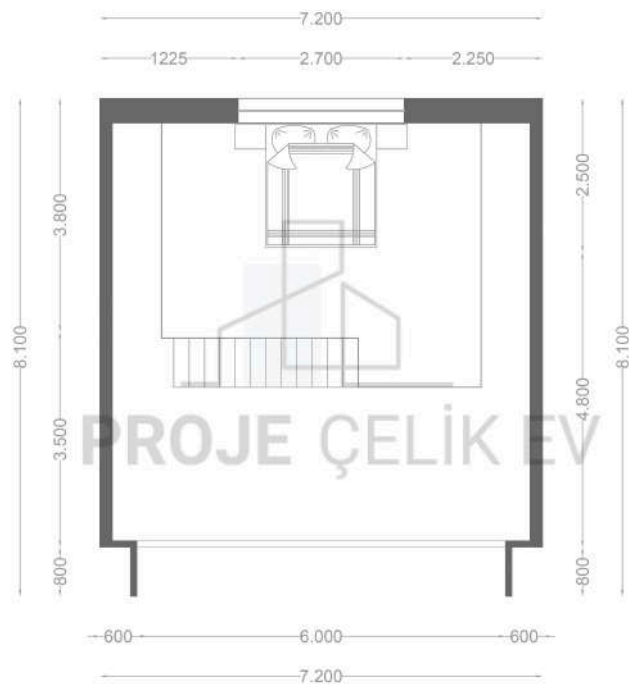


28

78 m² Steel Bungalow Projects



GROUND FLOOR PLAN
58 m² GROUND FLOOR + 20 m² FIRST FLOOR = 78 m² BUNGALOV



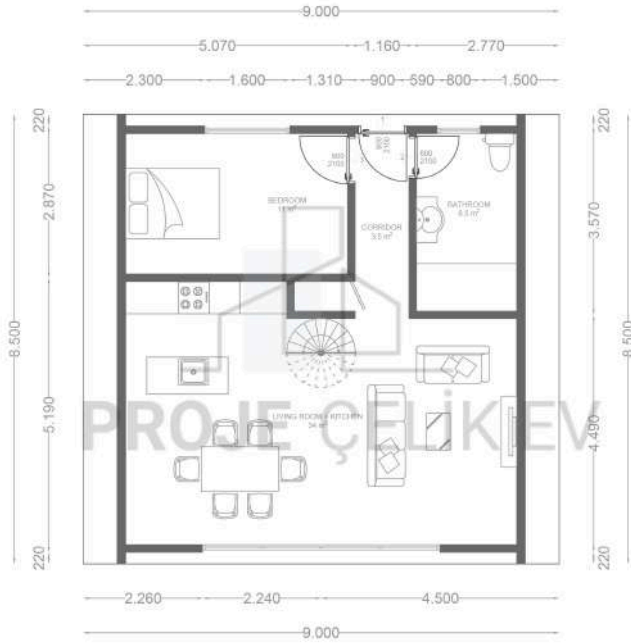
FIRST FLOOR PLAN
58 m² GROUND FLOOR + 20 m² FIRST FLOOR = 78 m² BUNGALOV

ÇAMBAŞI

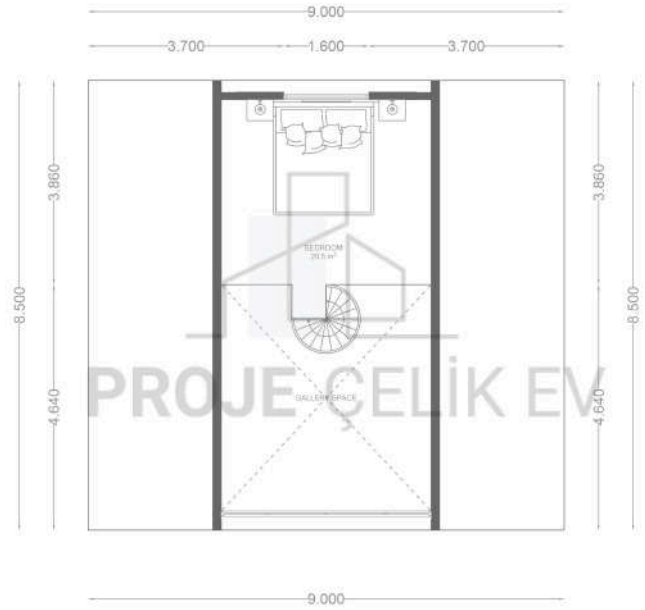


30

97 m² Steel Bungalow Projects



GROUND FLOOR PLAN
76.5 m² GROUND FLOOR + 39.5 m² FIRST FLOOR + 97 m² BUNGALOV



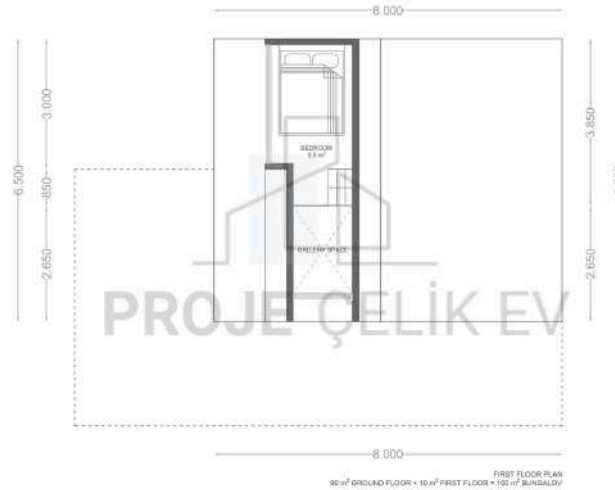
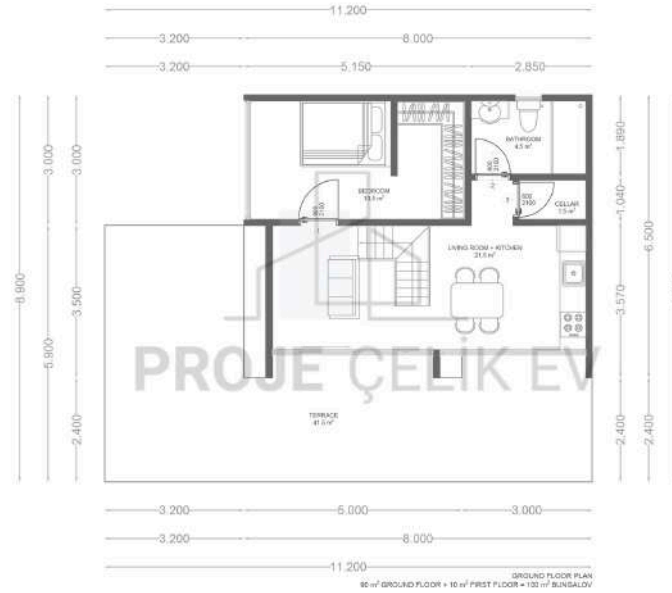
FIRST FLOOR PLAN
76.5 m² GROUND FLOOR + 39.5 m² FIRST FLOOR + 97 m² BUNGALOV

BEKTAŞ



32

100 m² Steel Bungalow Projects

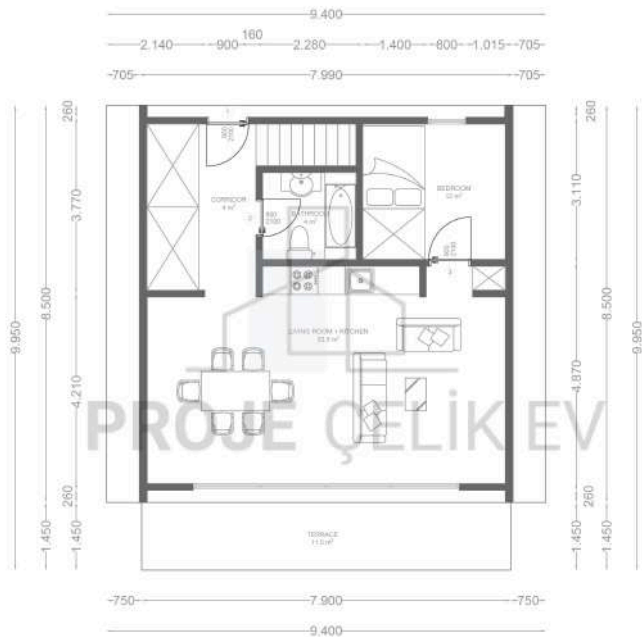


POKUT

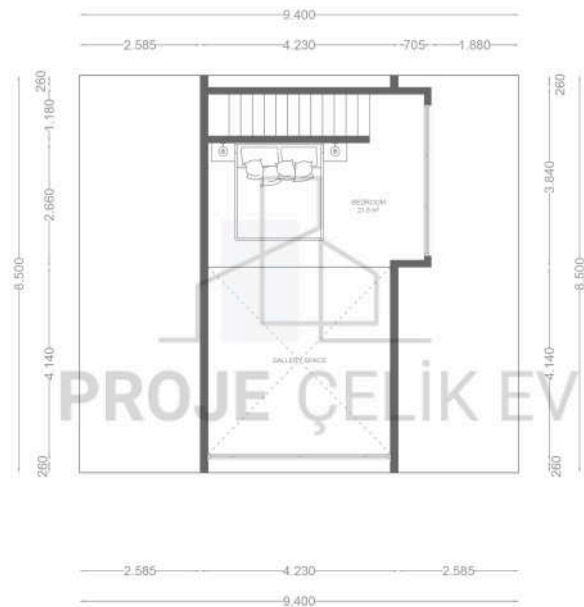


34

113 m² Steel Bungalow Projects



GROUND FLOOR PLAN
80 m² GROUND FLOOR + 11.5 m² TERRACE + 21.5 m² FIRST FLOOR = 113 m² BUNGALOW

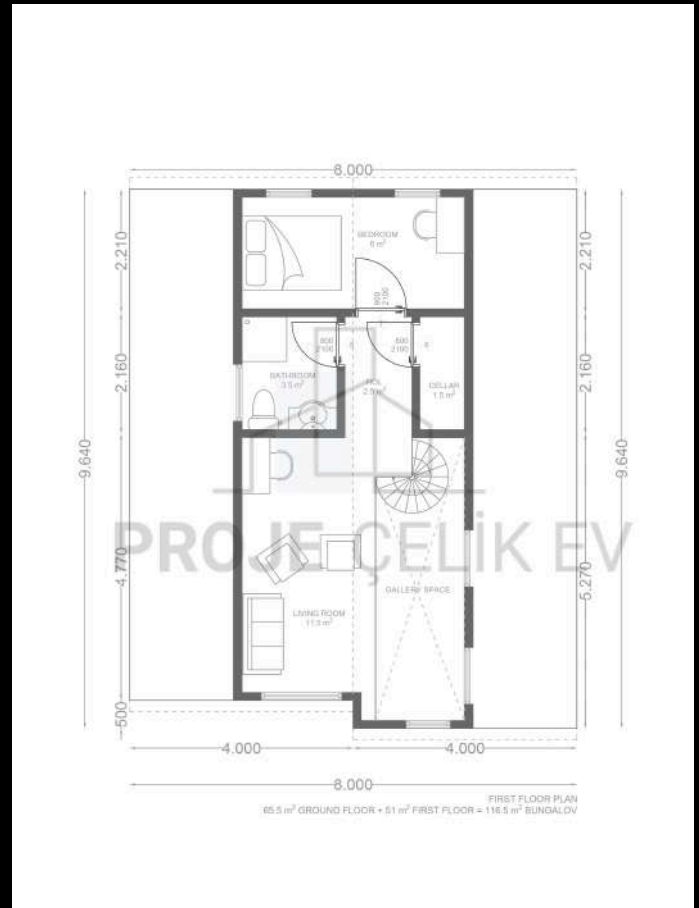
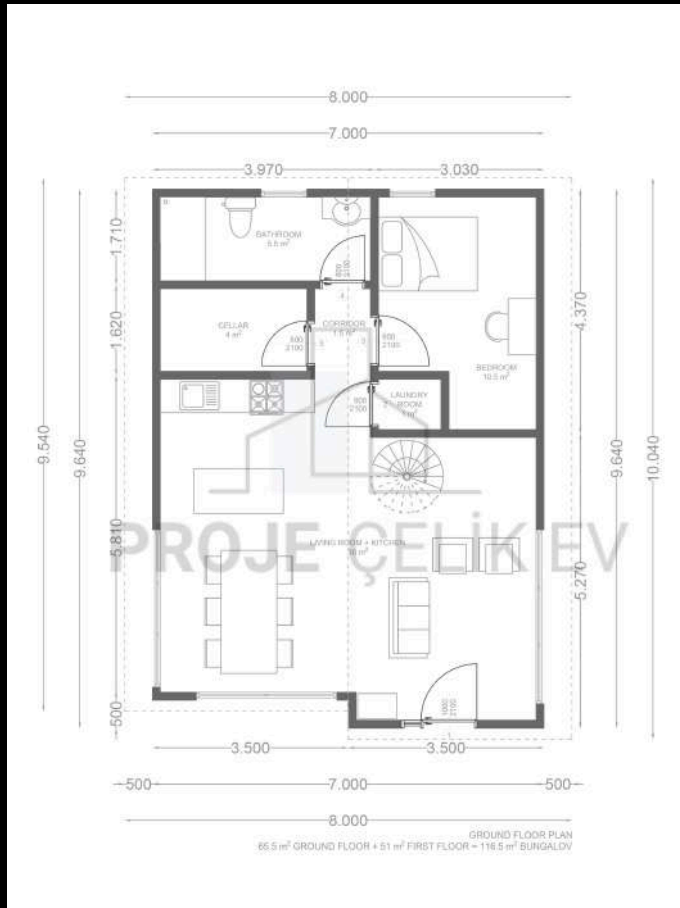


FIRST FLOOR PLAN
80 m² GROUND FLOOR + 11.5 m² TERRACE + 21.5 m² FIRST FLOOR = 113 m² BUNGALOW

KULAKKAYA



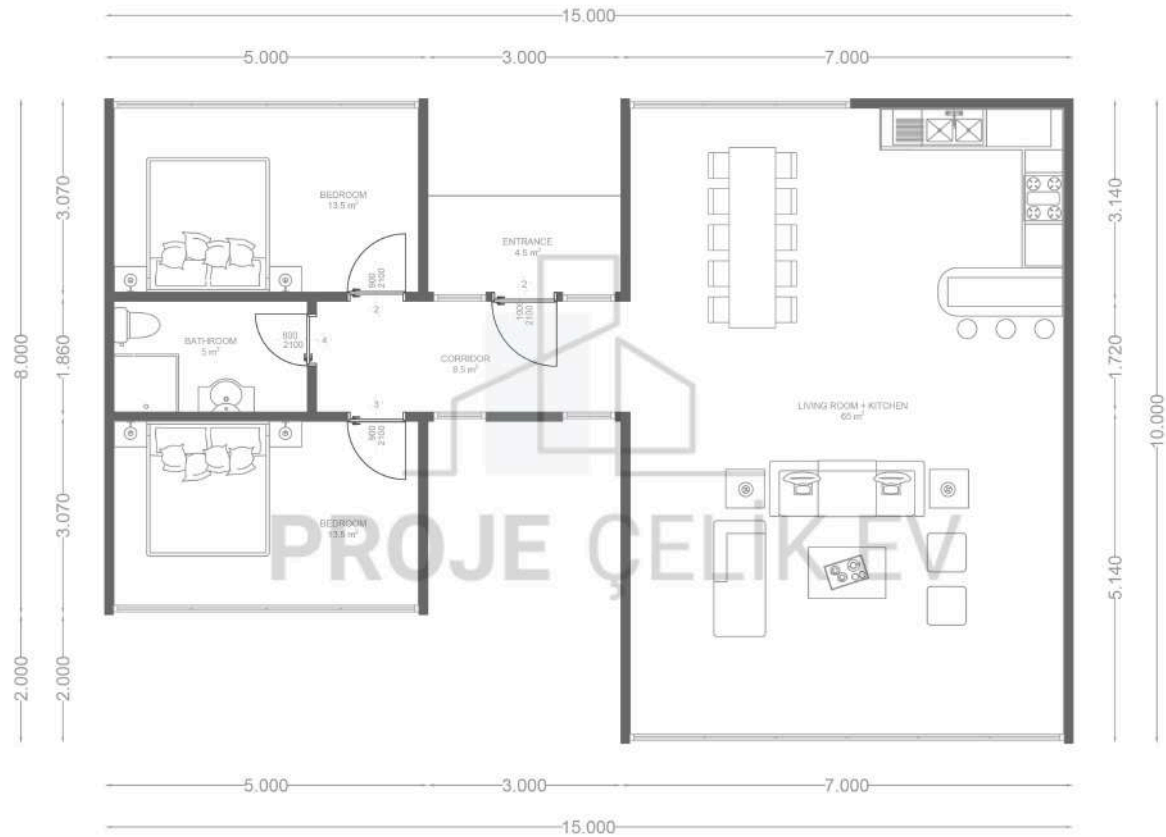
36 116.5 m² Steel Bungalow Projects



HUSER



38 120.5 m² Steel Bungalow Projects



118 m² + 4.5 m² ENTRANCE = 120.5 m² BUNGALOV PLAN

HIDIRNEBİ



40

121 m² Steel Bungalow Projects

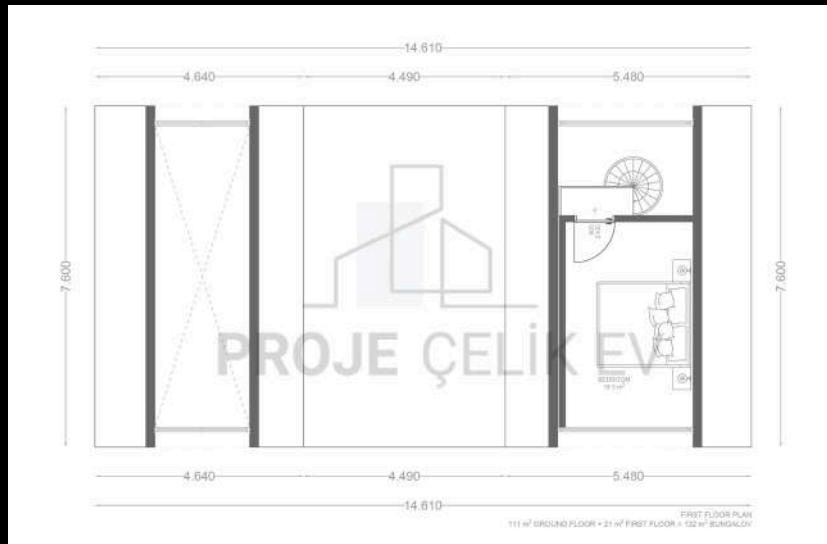
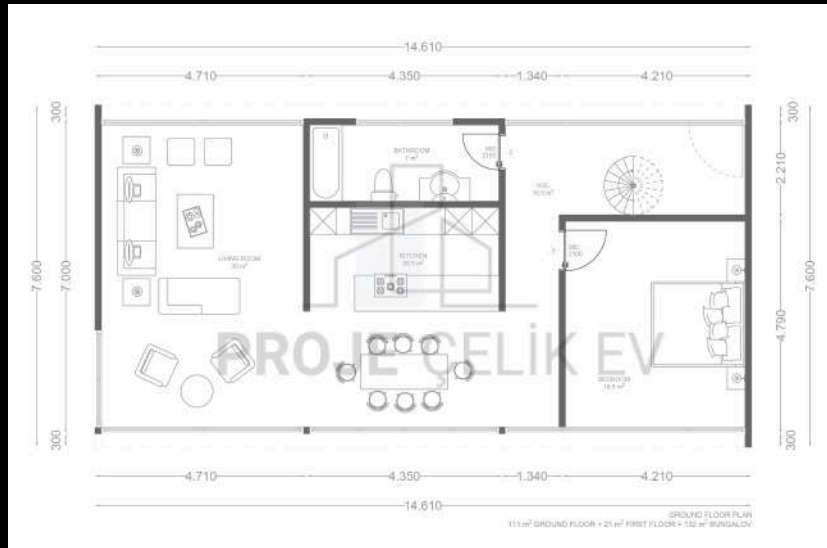


GiTO



42

132 m² Steel Bungalow Projects



KÜMBET



44

133 m² Steel Bungalow Projects

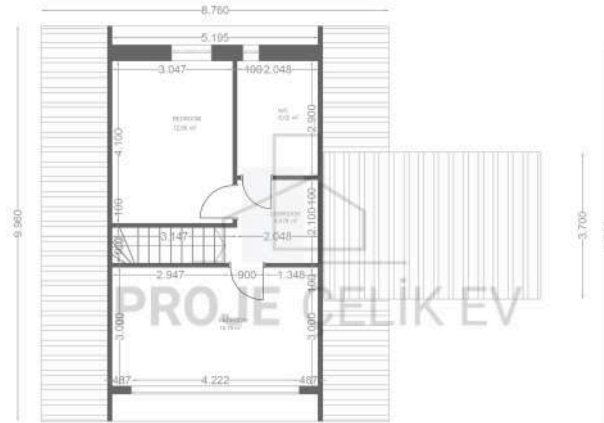


TOFIQ

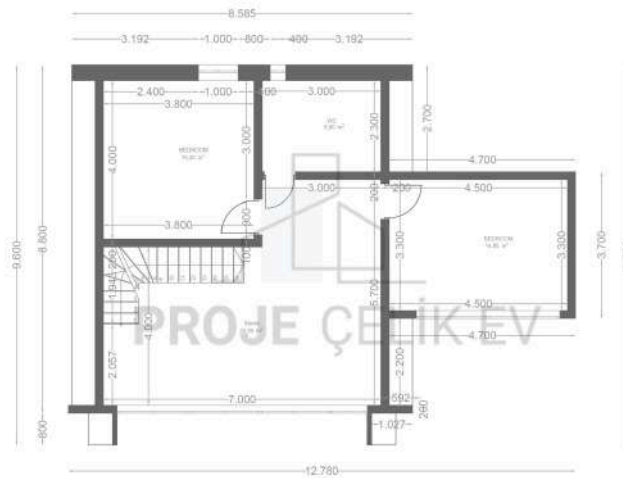


46

136 m² Steel Bungalow Projects



FIRST FLOOR PLAN
 46.5 m² GROUND FLOOR + 46.5 m² FIRST FLOOR + 136 m² BALCONY



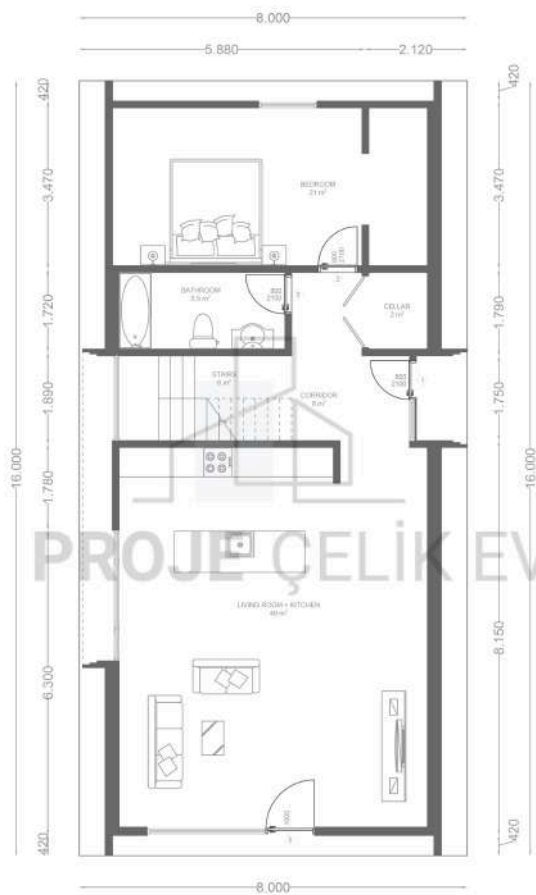
GROUND FLOOR PLAN
 46.5 m² GROUND FLOOR + 46.5 m² FIRST FLOOR + 136 m² BALCONY

KADIRGA

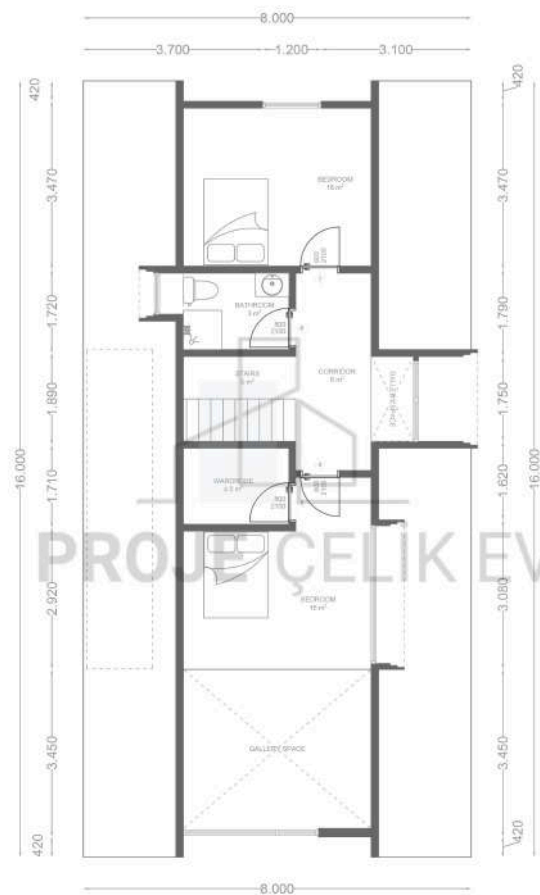


48

184 m² Steel Bungalow Projects



GROUND FLOOR PLAN
128 m² GROUND FLOOR + 98 m² FIRST FLOOR + 194 m² BUNGALOW



FIRST FLOOR PLAN
128 m² GROUND FLOOR + 98 m² FIRST FLOOR + 194 m² BUNGALOW

MERSİVAN



50

251 m² Steel Bungalow Projects

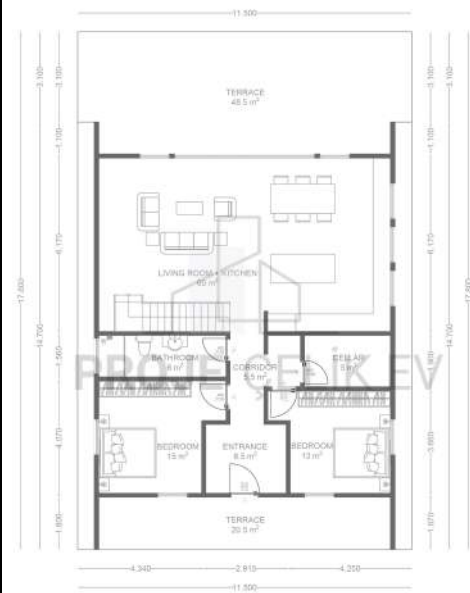


ANZER



52

312 m² Steel Bungalow Projects

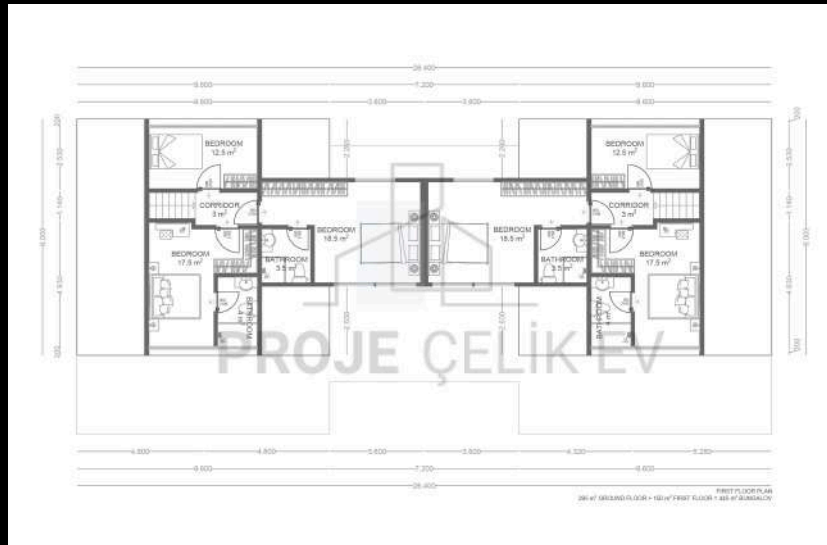
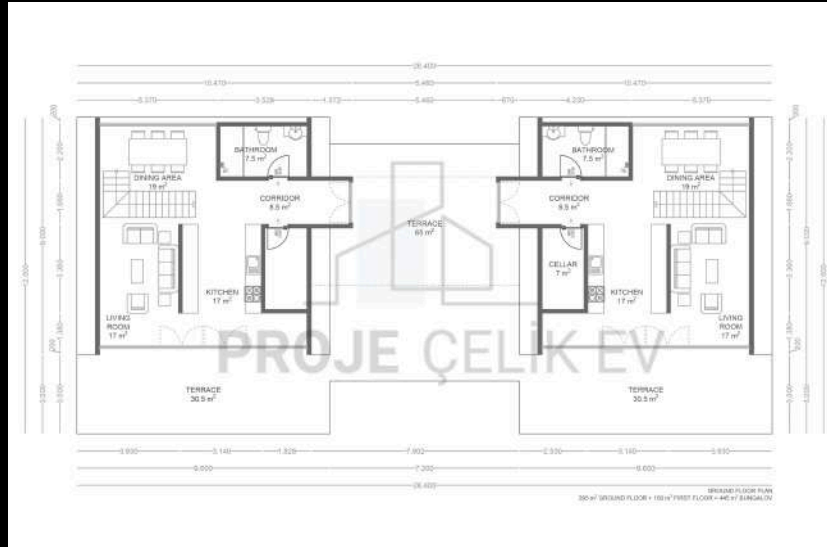


ALÇAKDERE



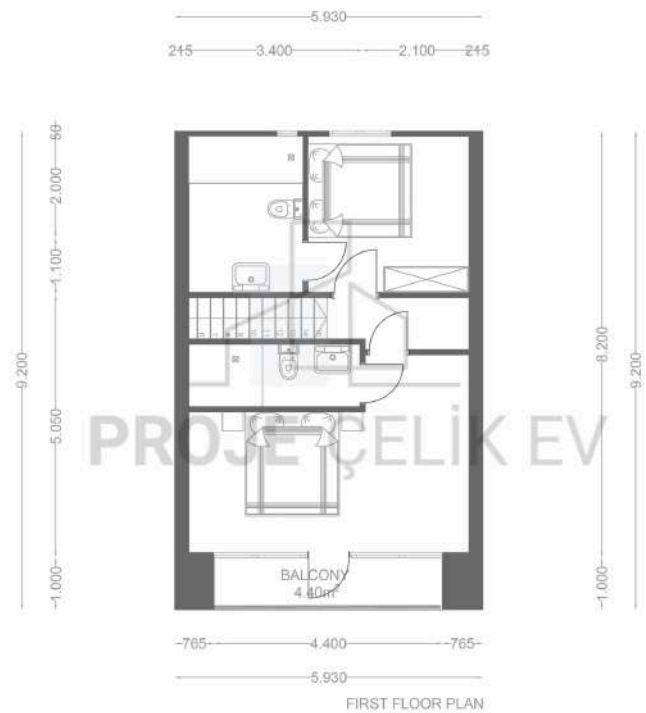
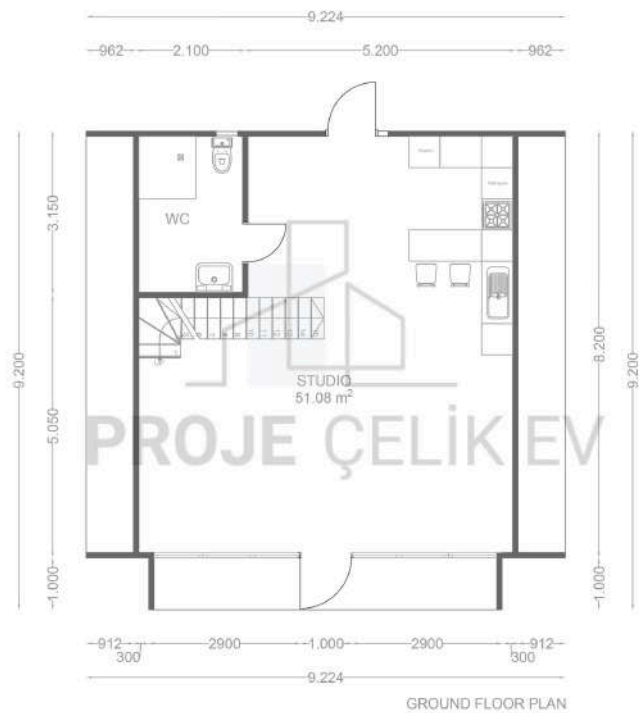
54

445 m² Steel Bungalow Projects



QUSAR





BARN HOUSE 1



BARN HOUSE 2



BARN HOUSE 3

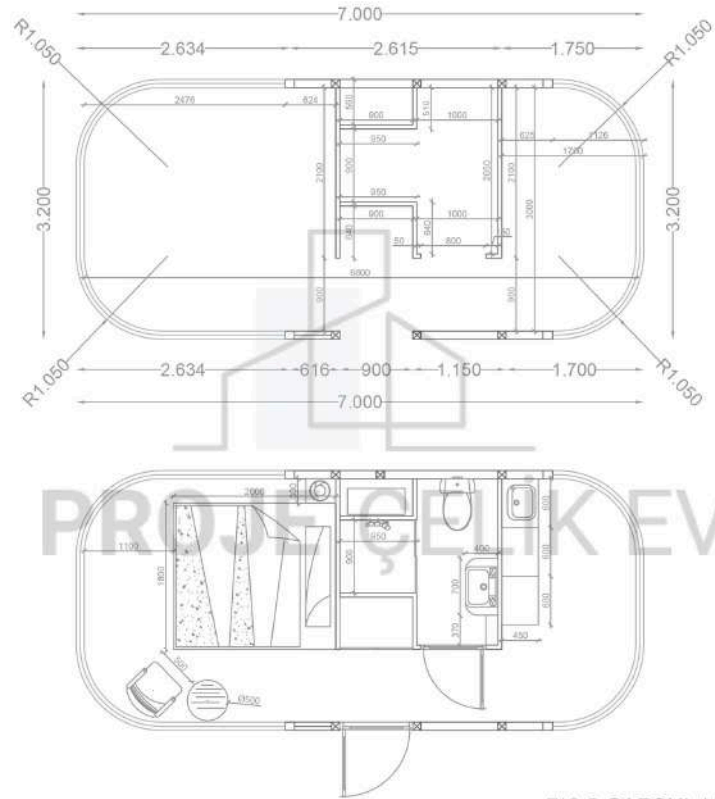


KIZIL ELMA 1



62

Capsule House



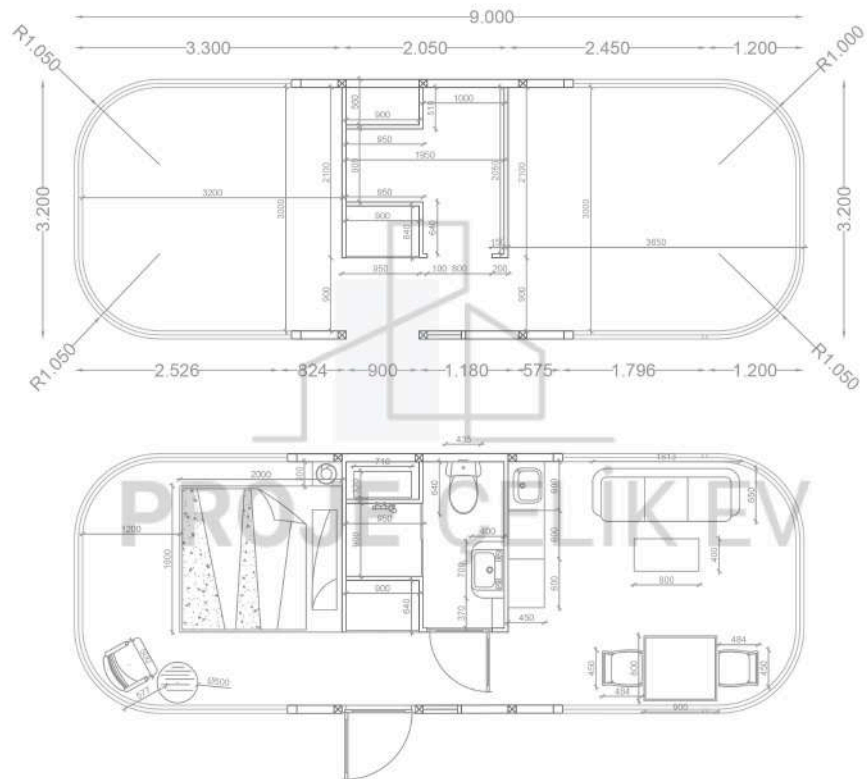
7*3.2 CAPSUL HOUSE

KIZIL ELMA 2



64

Capsule House



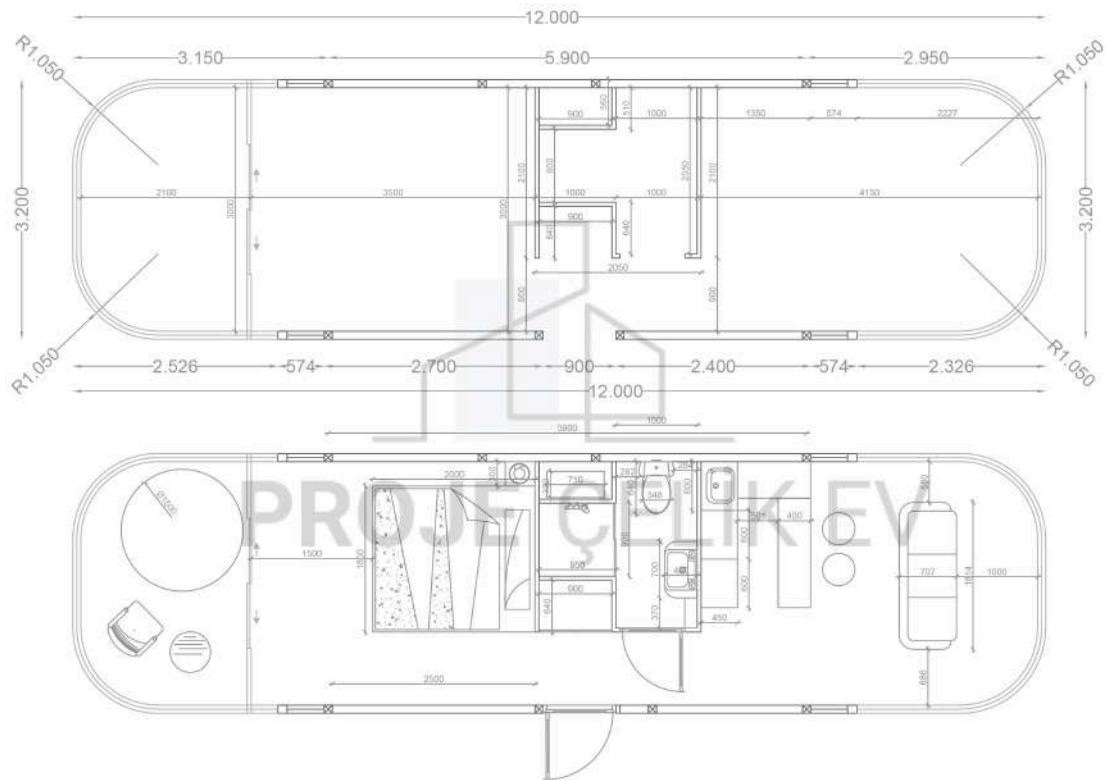
9*3.2 CAPSUL HOUSE

KIZIL ELMA 3



66

Capsule House



12*3.2 CAPSUL HOUSE

DUBLEKS

Çelik Villa Projelerimiz

DUPLEX

Steel Villa Projects

DUPLEKS

Dəmir Villa Layihələrimiz

НАШИ ПРОЕКТЫ

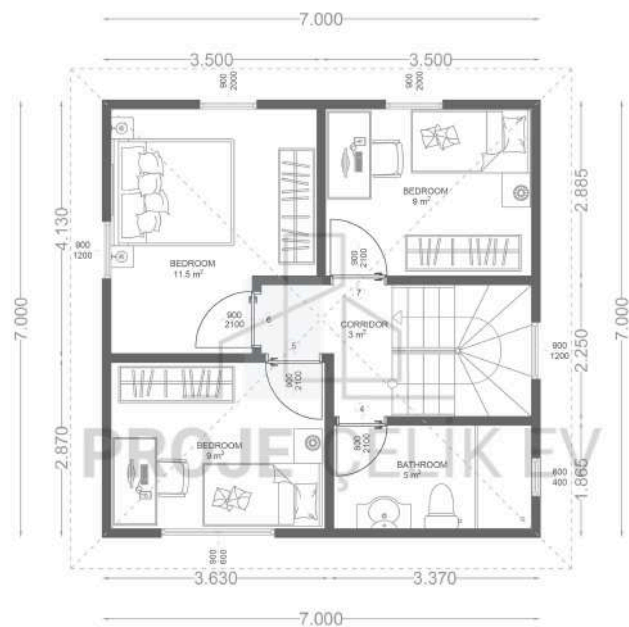
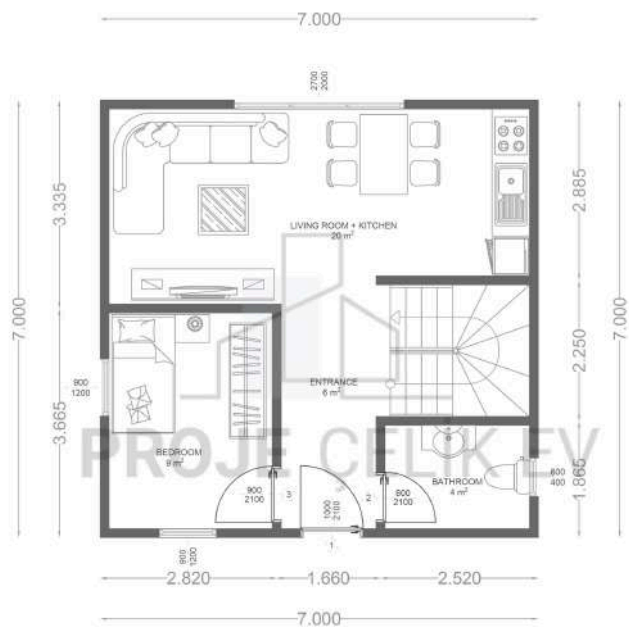
ДВУХЭТАЖНЫХ СТАЛЬНЫХ ВИЛЛ

GÜMÜŞHANE



70

98 m² Duplex
Steel Villa Projects

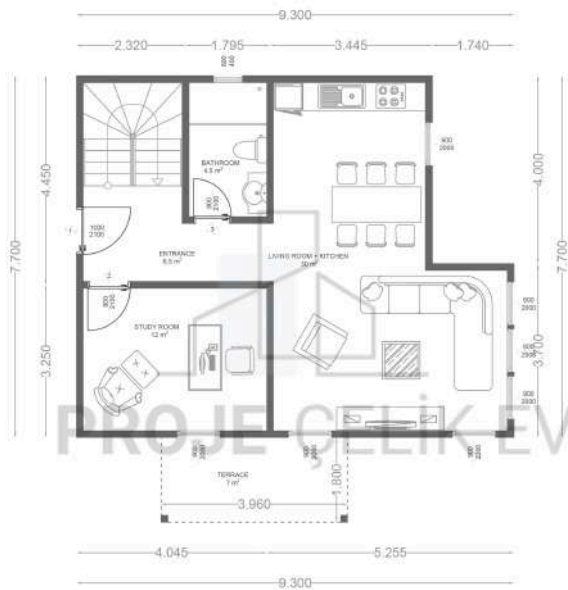


TEKİRDAĞ

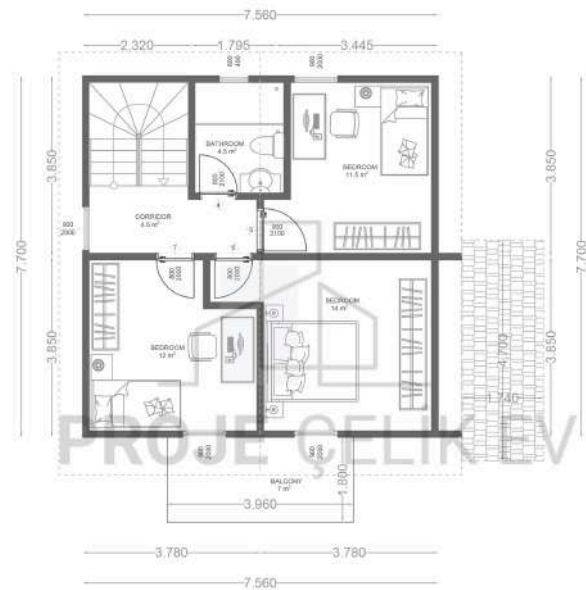


72

136.5 m² Duplex
Steel Villa Projects



7 m² TERRACE + 64.5 m² GROUND FLOOR PLAN
 ENTRANCE 8.5 m²
 LIVING ROOM + KITCHEN 20 m²
 BATHROOM 4.5 m²
 STUDY ROOM 12 m²
 TERRACE 7 m²
 7 m² TERRACE + 64.5 m² GROUND FLOOR + 7 m² BALCONY + 58 m² FIRST FLOOR = 136.5 m² STEEL HOUSE



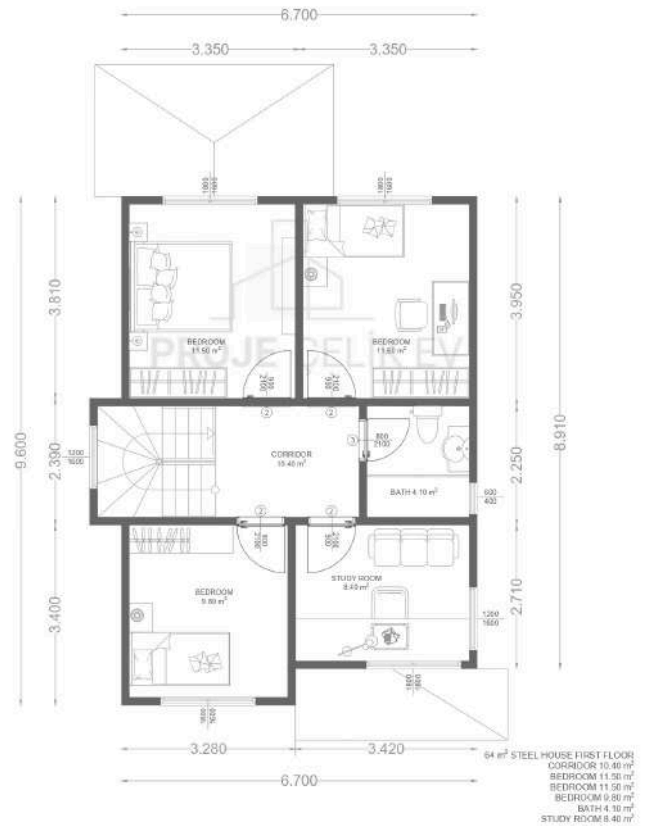
7 m² BALCONY + 58 m² FIRST FLOOR PLAN
 CORRIDOR 4.5 m²
 BEDROOM 11.5 m²
 BEDROOM 12 m²
 BEDROOM 14 m²
 BATHROOM 4.5 m²
 BALCONY 7 m²
 7 m² TERRACE + 64.5 m² GROUND FLOOR + 7 m² BALCONY + 58 m² FIRST FLOOR = 136.5 m² STEEL HOUSE

ELAŽIĞ



74

137 m² Duplex
Steel Villa Projects



OSMANIYE



76

138 m² Duplex
Steel Villa Projects

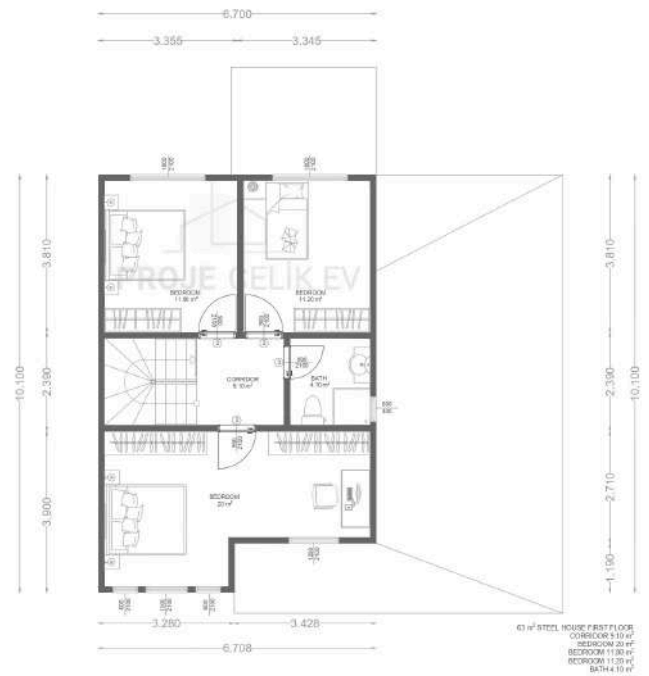


BARTIN



78

141 m² Duplex
Steel Villa Projects



TRABZON



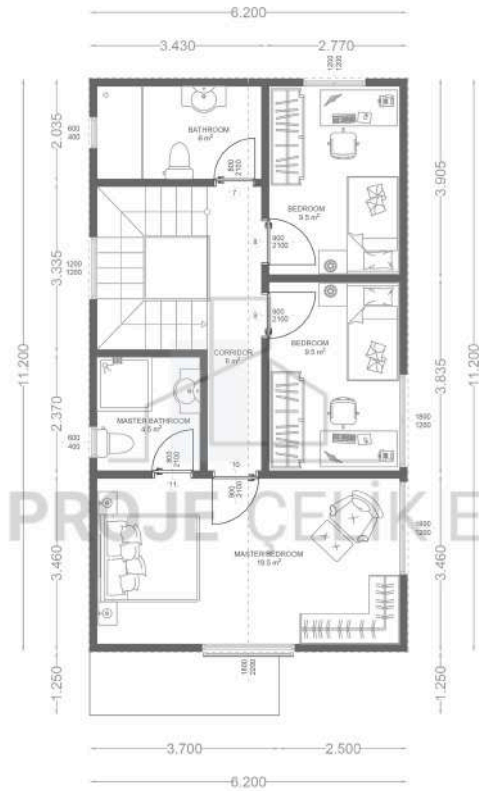
80

143.5 m² Duplex
Steel Villa Projects



74 m² GROUND FLOOR PLAN
CORRIDOR 8 m²
BEDROOM 9.5 m²
WC 3.5 m²
CELLAR 4.5 m²
KITCHEN 9.3 m²
LIVING ROOM 27.6 m²

74 m² GROUND FLOOR + 69.5 m² FIRST FLOOR = 143.5 m² STEEL HOUSE



69.5 m² FIRST FLOOR PLAN
CORRIDOR 8 m²
BEDROOM 9.5 m²
BEDROOM 9.5 m²
MASTER BEDROOM 19.5 m²
MASTER BATHROOM 4.5 m²
BATHROOM 8 m²

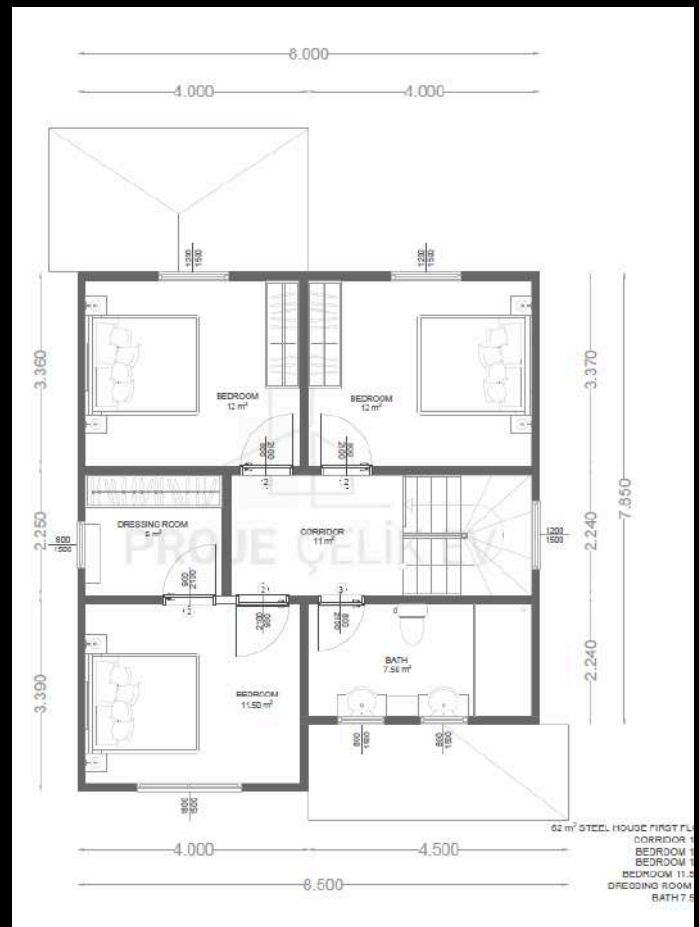
74 m² GROUND FLOOR + 69.5 m² FIRST FLOOR = 143.5 m² STEEL HOUSE

NIĞDE



82

150 m² Duplex
Steel Villa Projects

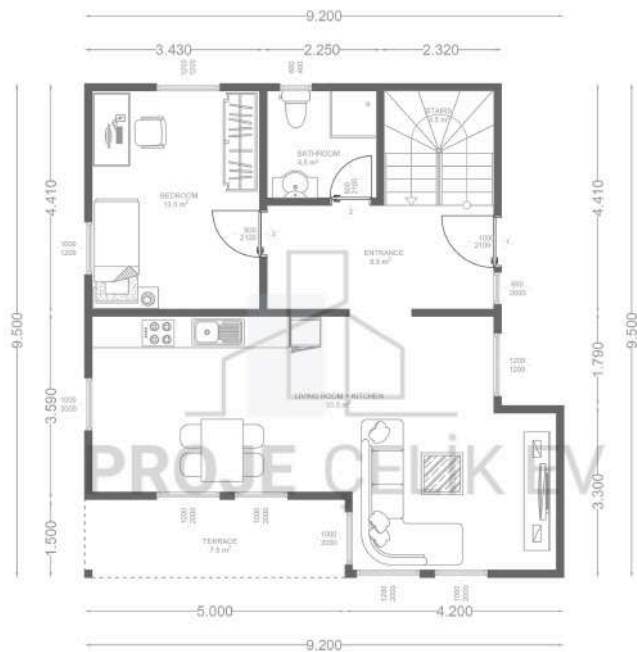


BURSA



84

151.5 m² Duplex
Steel Villa Projects



7.5 m² TERRACE + 72.6 m² GROUND FLOOR + 7.5 m² BALCONY + 64 m² FIRST FLOOR = 151.5 m² STEEL HOUSE



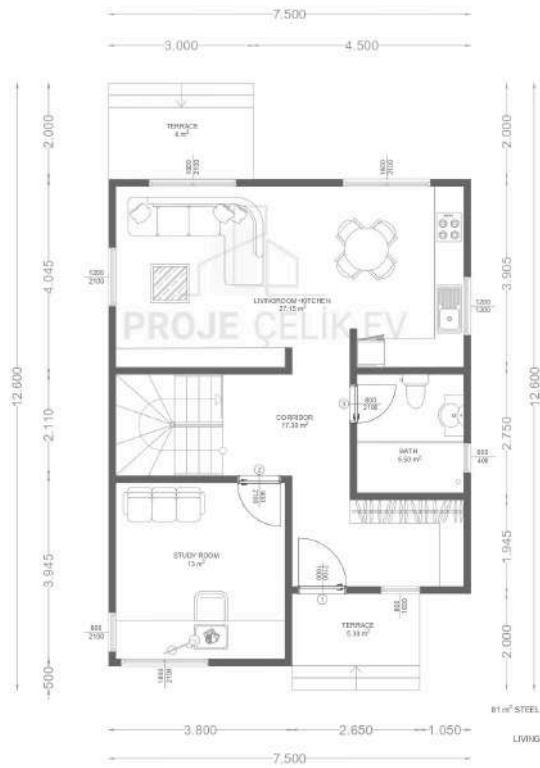
7.5 m² TERRACE + 72.6 m² GROUND FLOOR + 7.5 m² BALCONY + 64 m² FIRST FLOOR = 151.5 m² STEEL HOUSE

BAYBURT



86

157 m² Duplex
Steel Villa Projects

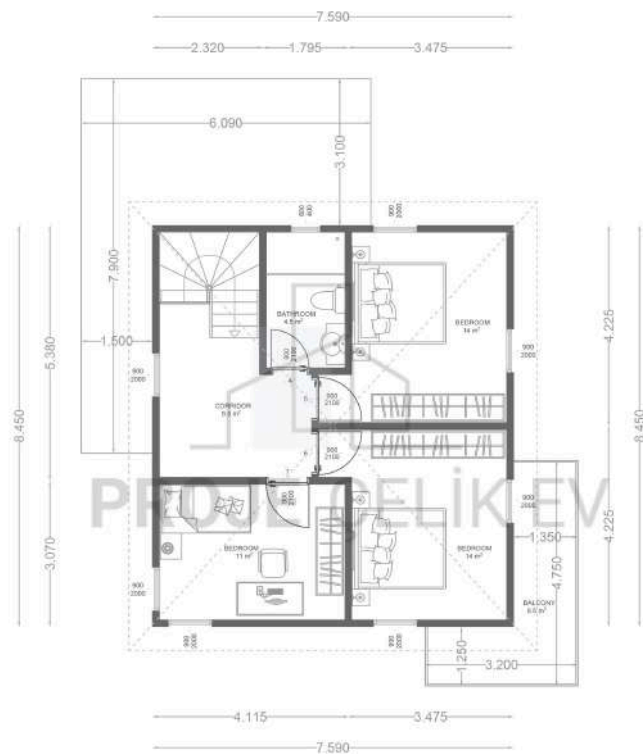
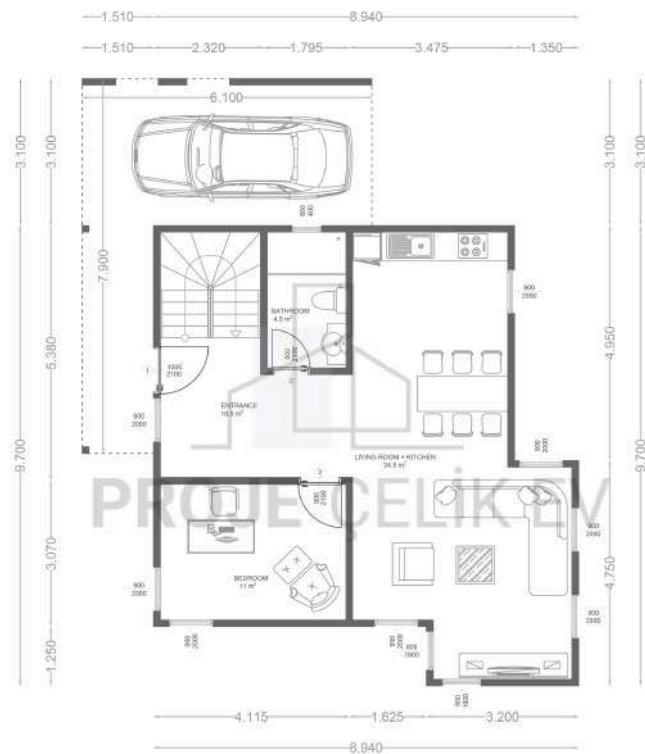


MUĞLA



88

171.5 m² Duplex
Steel Villa Projects

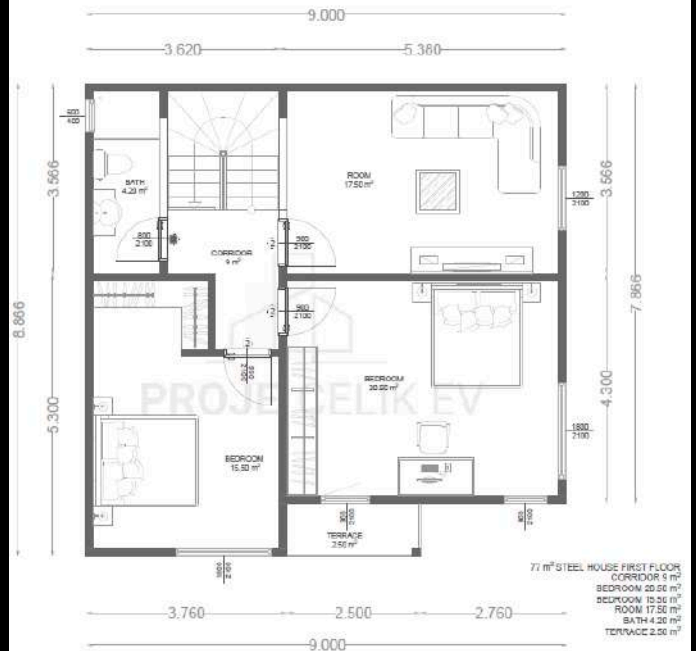


ÇORUM



90

184 m² Duplex
Steel Villa Projects

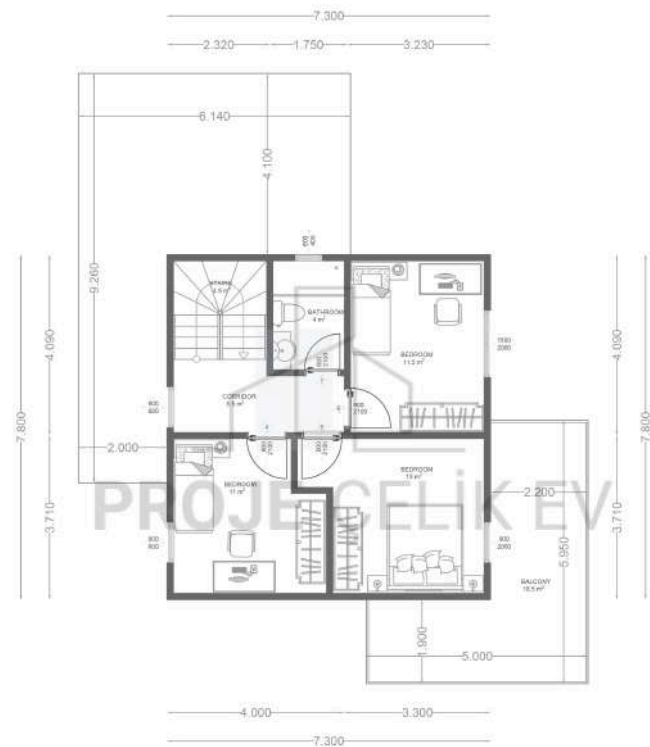
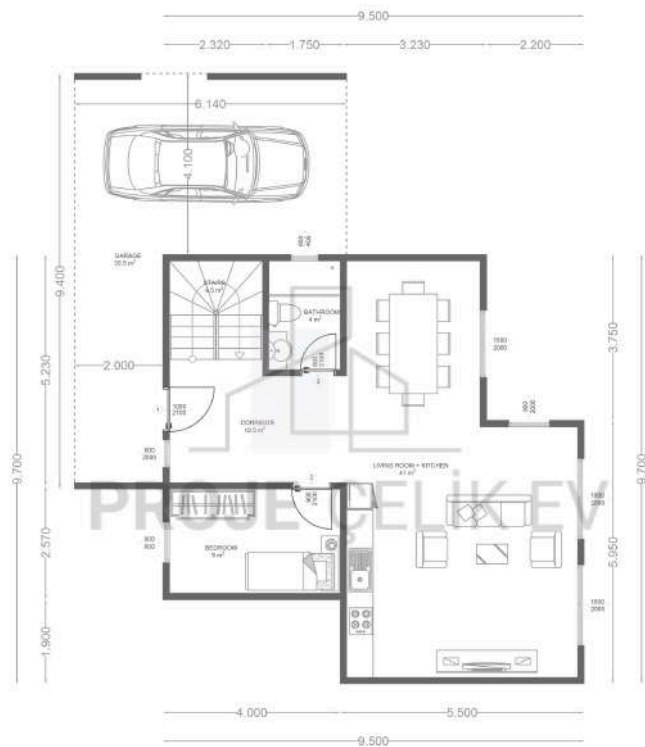


İZMİR



92

187.5 m² Duplex
Steel Villa Projects

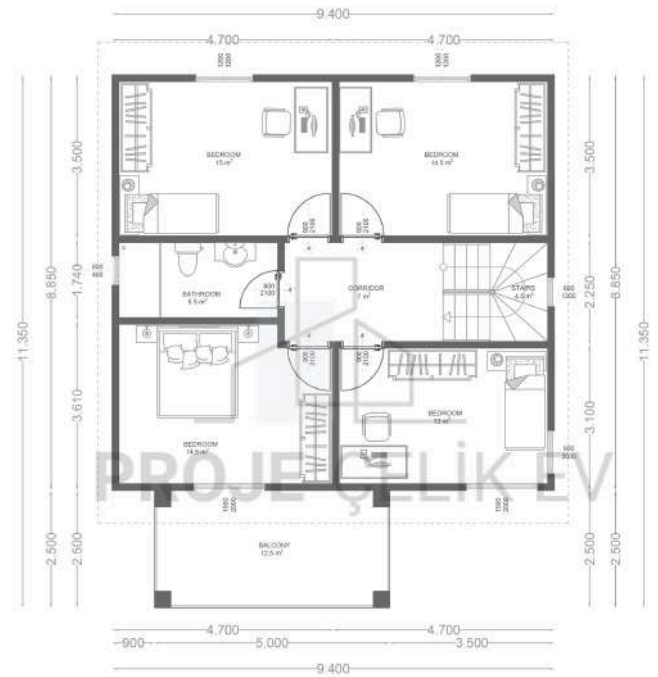
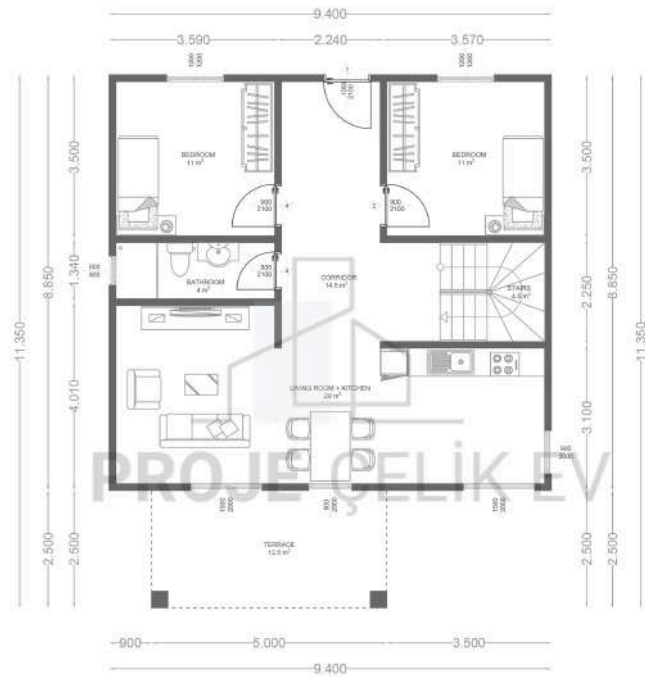


SİNOP



94

191 m² Duplex
Steel Villa Projects

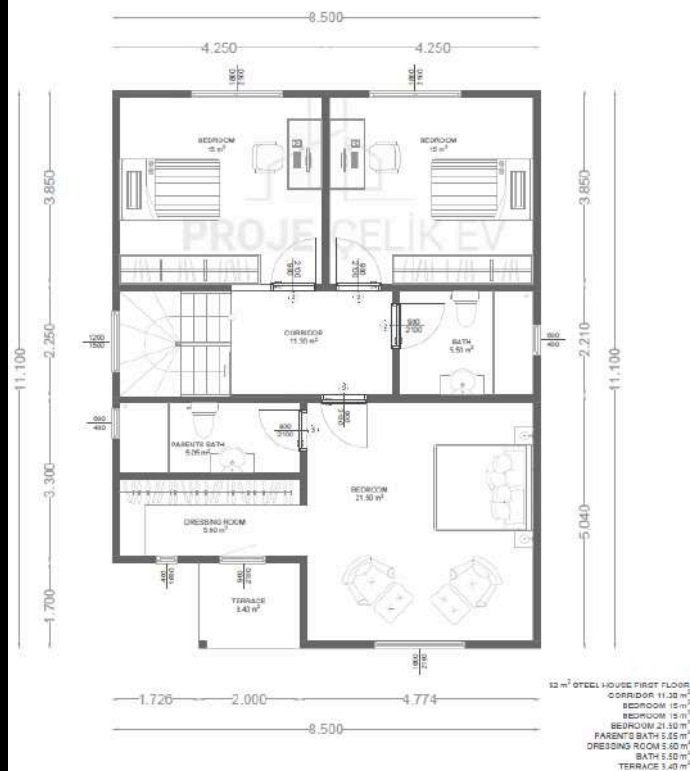
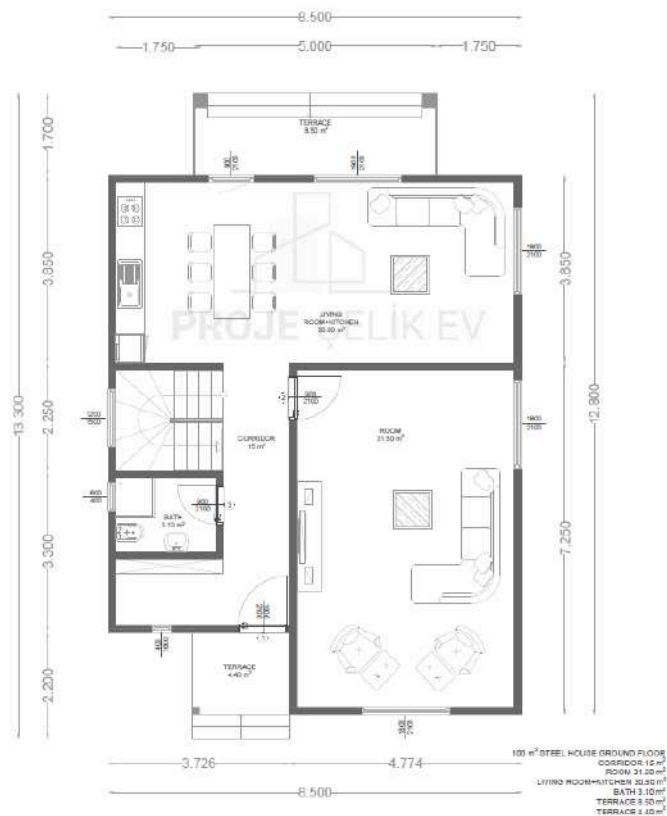


BURDUR



96

192 m² Duplex
Steel Villa Projects

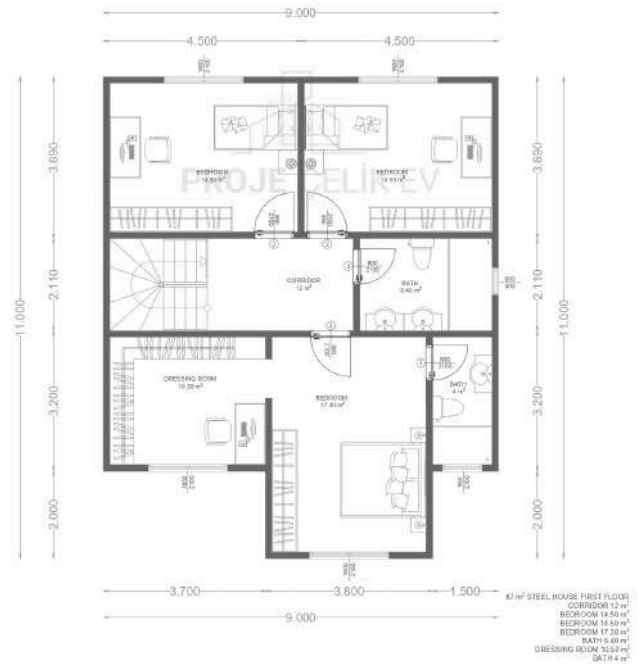
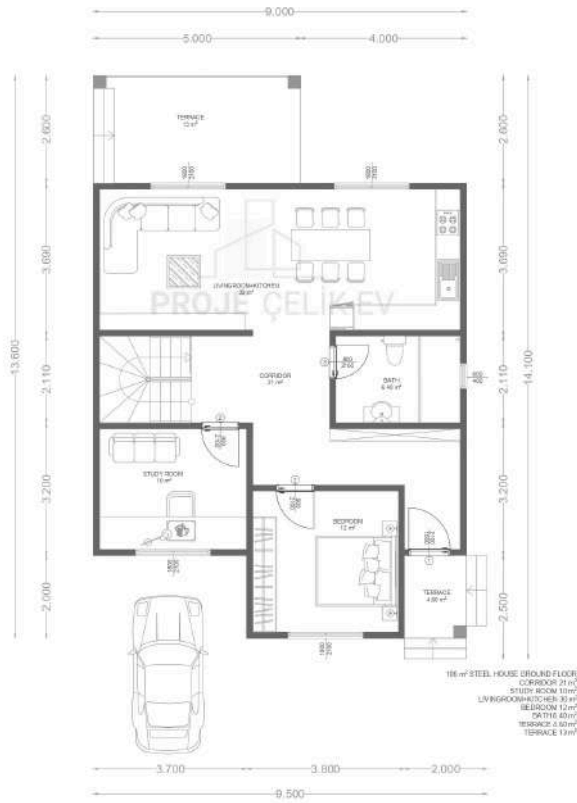


ÇANKIRI



98

193 m² Duplex
Steel Villa Projects

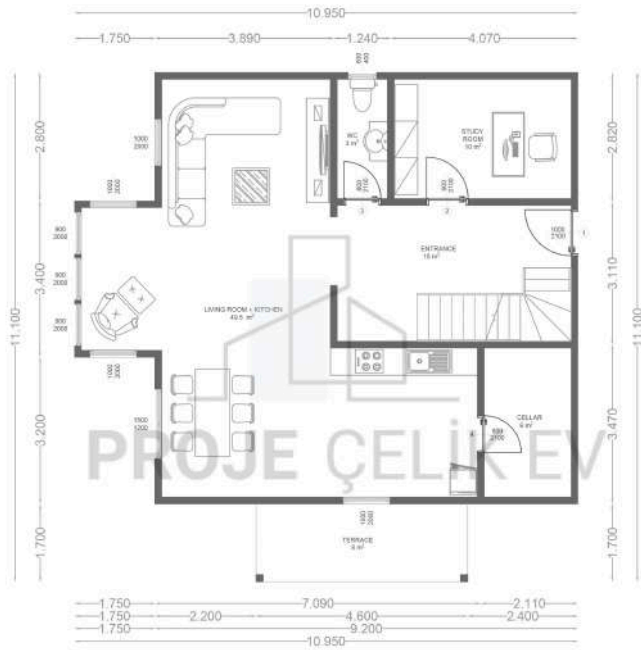


EDİRNE

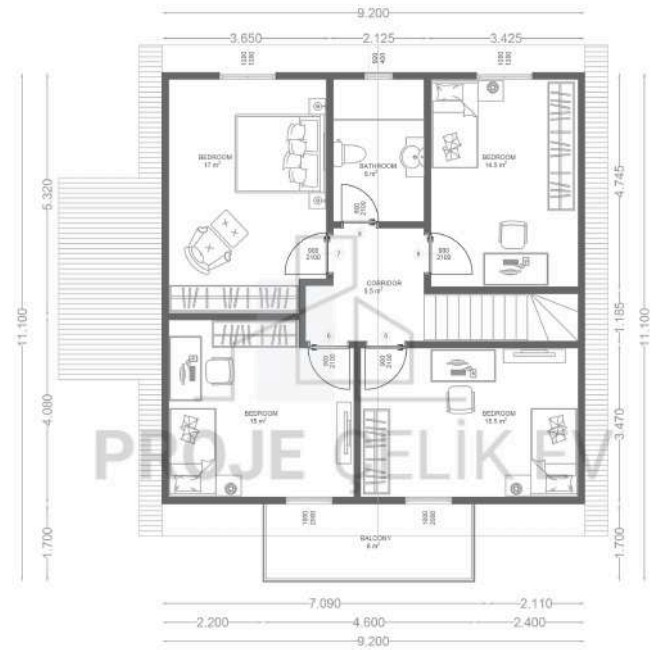


100

195 m² Duplex
Steel Villa Projects



8 m² + 92.5 m² GROUND FLOOR PLAN
CORRIDOR 15 m²
LIVING ROOM + KITCHEN 45.5 m²
WC 3 m²
STUDY ROOM 10 m²
CELLAR 6 m²
8 m² TERRACE + 92.5 m² GROUND FLOOR + 8 m² BALCONY + 86.5 m² FIRST FLOOR = 196 m² STEEL HOUSE



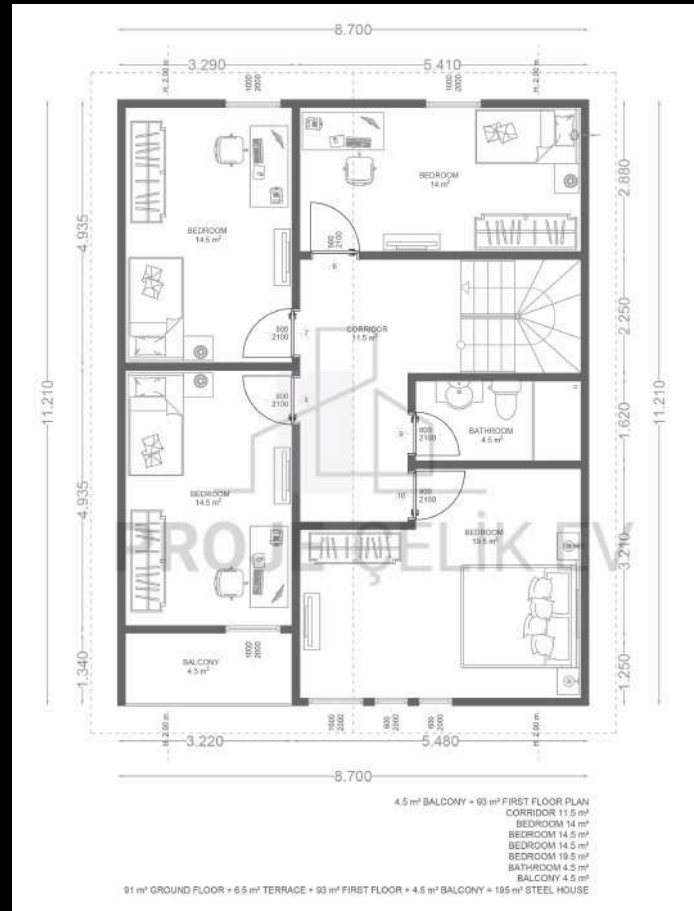
8 m² BALCONY + 86.5 m² FIRST FLOOR PLAN
CORRIDOR 5.5 m²
BEDROOM 15 m²
BEDROOM 15 m²
BEDROOM 14.5 m²
BEDROOM 14.5 m²
BATHROOM 5 m²
8 m² TERRACE + 92.5 m² GROUND FLOOR + 8 m² BALCONY + 86.5 m² FIRST FLOOR = 196 m² STEEL HOUSE

ORDU



102

195 m² Duplex
Steel Villa Projects

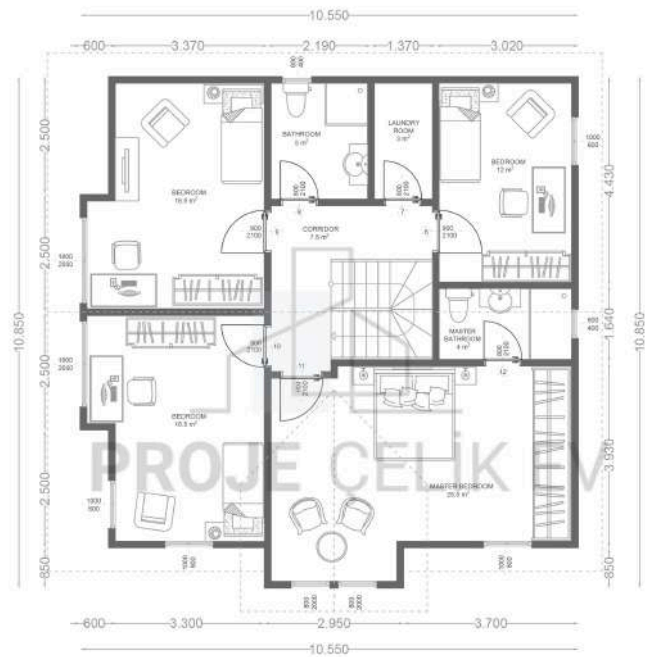
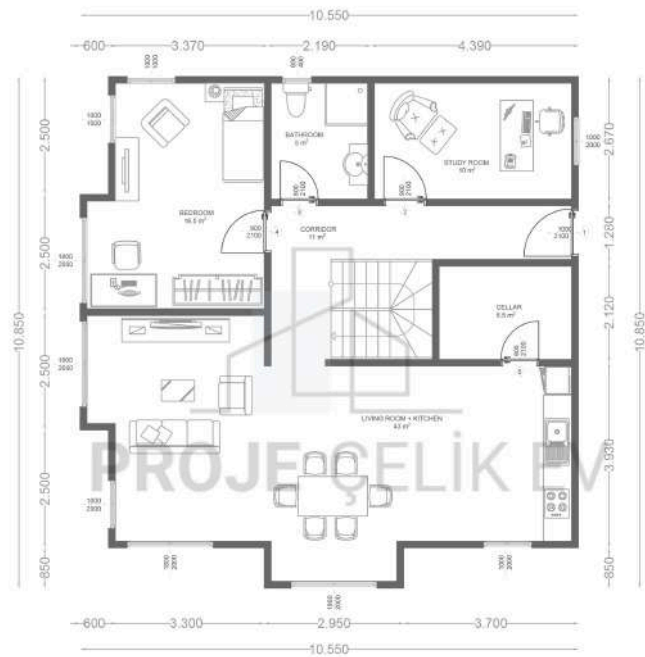


GİRESUN



104

210 m² Duplex
Steel Villa Projects

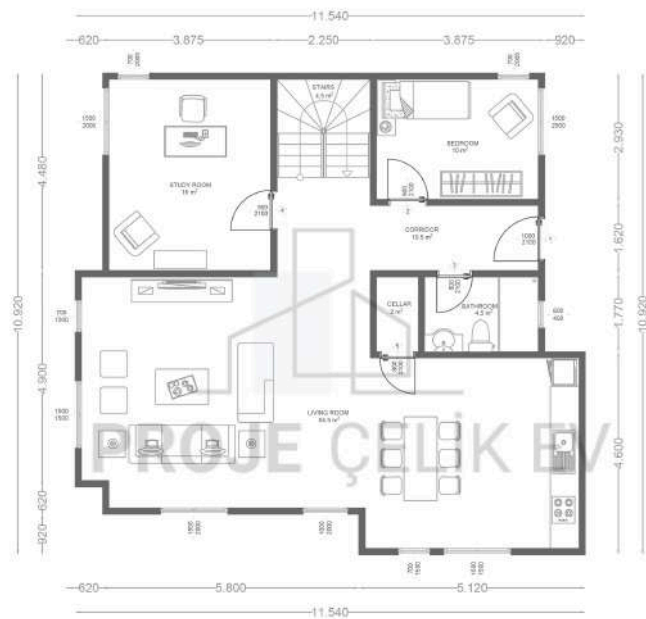


ARTVİN



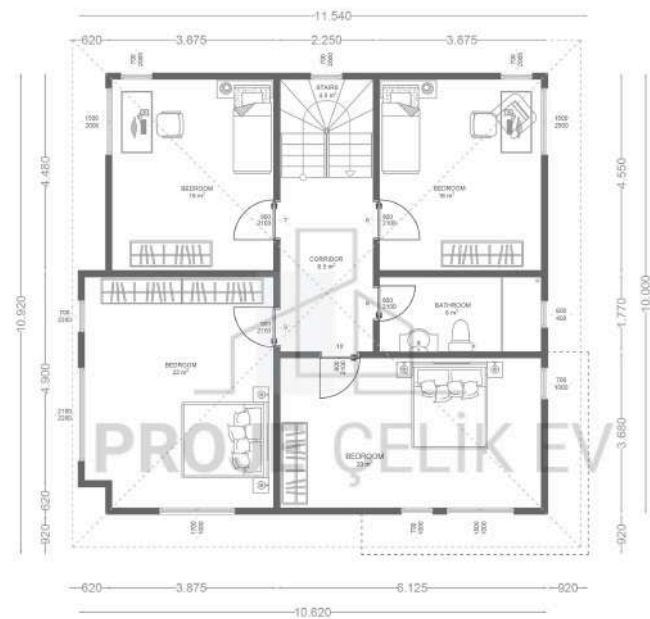
106

214 m² Duplex
Steel Villa Projects



111 m² GROUND FLOOR PLAN
CORRIDOR 10.5 m²
BEDROOM 10 m²
STUDY ROOM 15 m²
LIVING ROOM + KITCHEN 54.5 m²
BATHROOM 4.5 m²
CELLAR 2 m²
STAIRS 4.5 m

111 m² GROUND FLOOR + 103 m² FIRST FLOOR + 214 m² STEEL HOUSE



103 m² FIRST FLOOR PLAN
CORRIDOR 6.5 m²
BEDROOM 10 m²
BEDROOM 10 m²
BEDROOM 10 m²
BEDROOM 20 m²
BEDROOM 20 m²
BATHROOM 4.5 m²
STAIRS 4.5 m

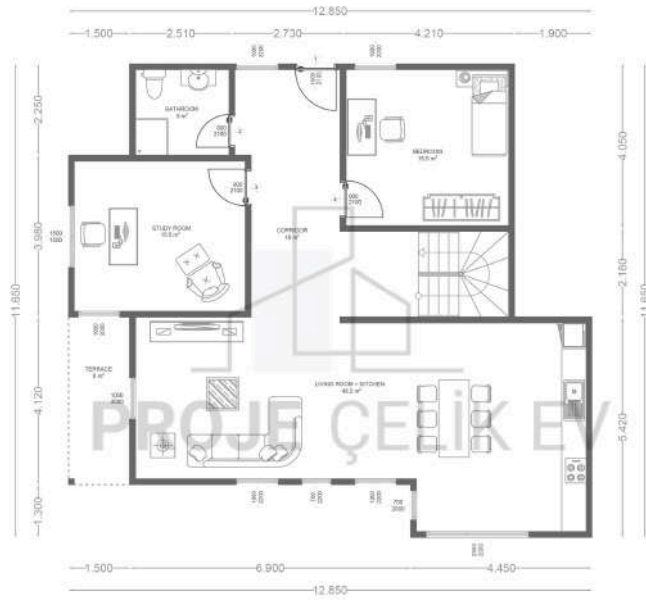
111 m² GROUND FLOOR + 103 m² FIRST FLOOR + 214 m² STEEL HOUSE

AYDIN

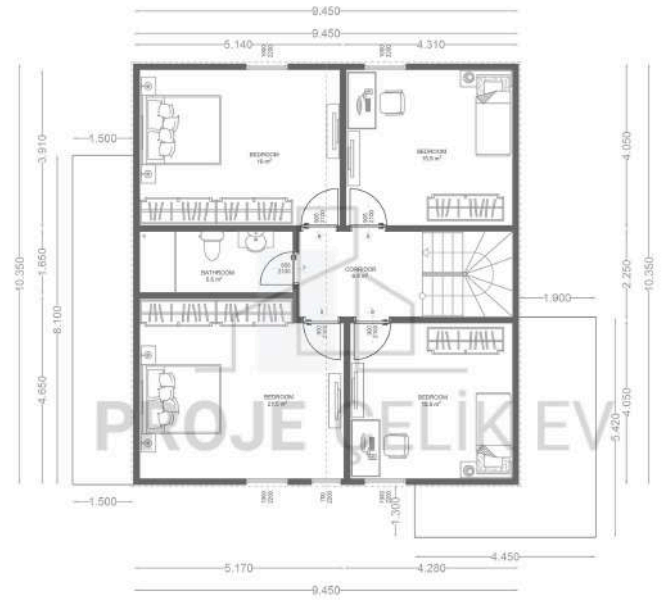


108

221 m² Duplex
Steel Villa Projects



64m² 117.5 m² GROUND FLOOR PLAN
CORRIDOR 10 m²
LIVING ROOM + KITCHEN 40.5 m²
BEDROOM 15.5 m²
STUDY ROOM 15.5 m²
BATH ROOM 5.5 m²
TERRACE 8.5 m²
8 m² TERRACE + 117.5 m² GROUND FLOOR + 97.5 m² FIRST FLOOR + 221 m² STEEL HOUSE



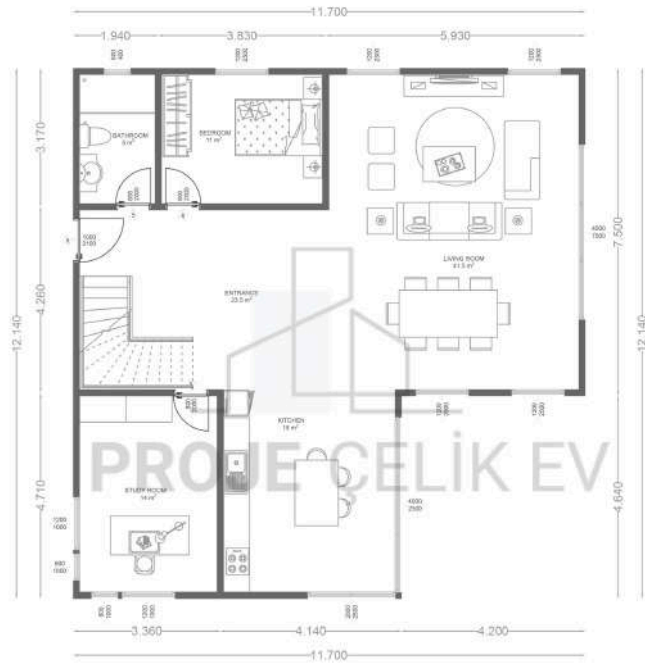
97.5 m² FIRST FLOOR PLAN
CORRIDOR 6.5 m²
BEDROOM 15.5 m²
BEDROOM 15.5 m²
BEDROOM 15.5 m²
BEDROOM 15.5 m²
BATH ROOM 5.5 m²
6 m² TERRACE + 117.5 m² GROUND FLOOR + 97.5 m² FIRST FLOOR + 221 m² STEEL HOUSE

ÇANAKKALE

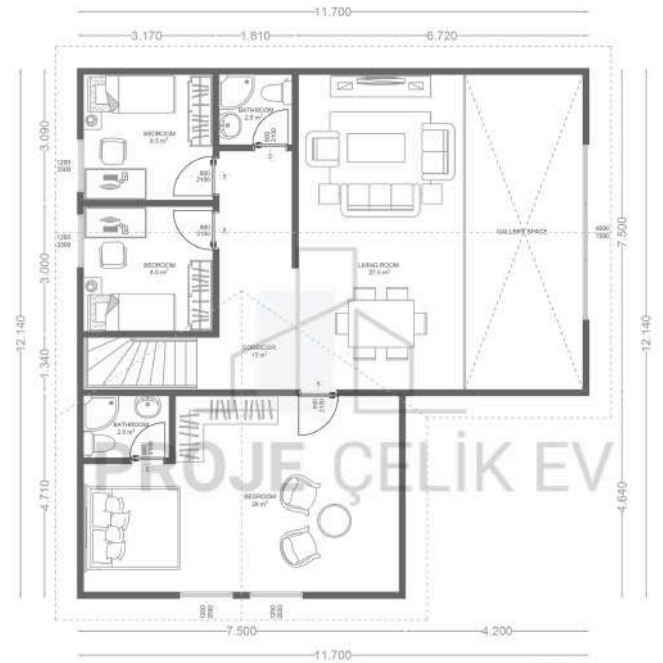


110

223.5 m² Duplex
Steel Villa Projects



122.5 m² GROUND FLOOR PLAN
 ENTRANCE 23.3 m²
 BEDROOM 11 m²
 STUDY ROOM 16 m²
 BATHROOM 5 m²
 KITCHEN 18 m²
 LIVING ROOM 23.3 m²
 122.5 m² GROUND FLOOR + 101 m² FIRST FLOOR = 223.5 m² STEEL HOUSE



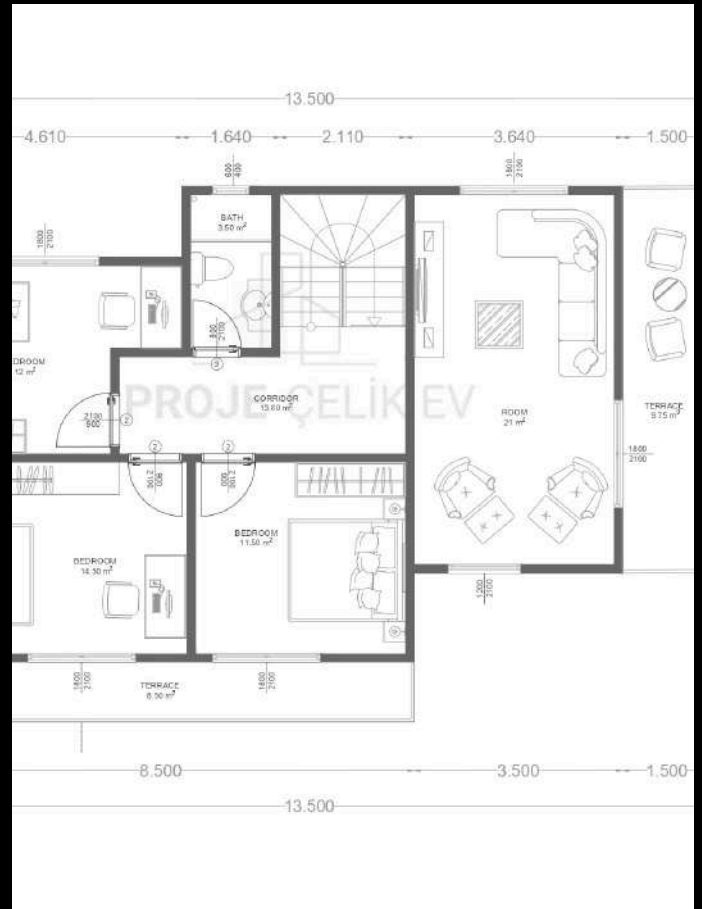
101 m² FIRST FLOOR
 CORRIDOR 13 m²
 BEDROOM 28 m²
 BEDROOM 8.5 m²
 BEDROOM 5.5 m²
 LIVING ROOM 27.5 m²
 BATHROOM 2.5 m²
 122.5 m² GROUND FLOOR + 101 m² FIRST FLOOR = 223.5 m² STEEL HOUSE

KASTAMONU



112

228 m² Duplex
Steel Villa Projects

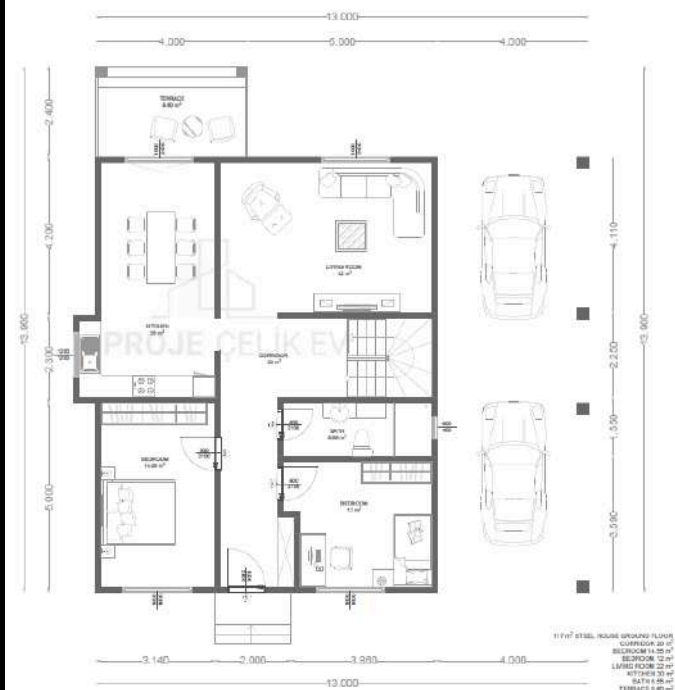


AFYONKARAHİSAR



114

230 m² Duplex
Steel Villa Projects

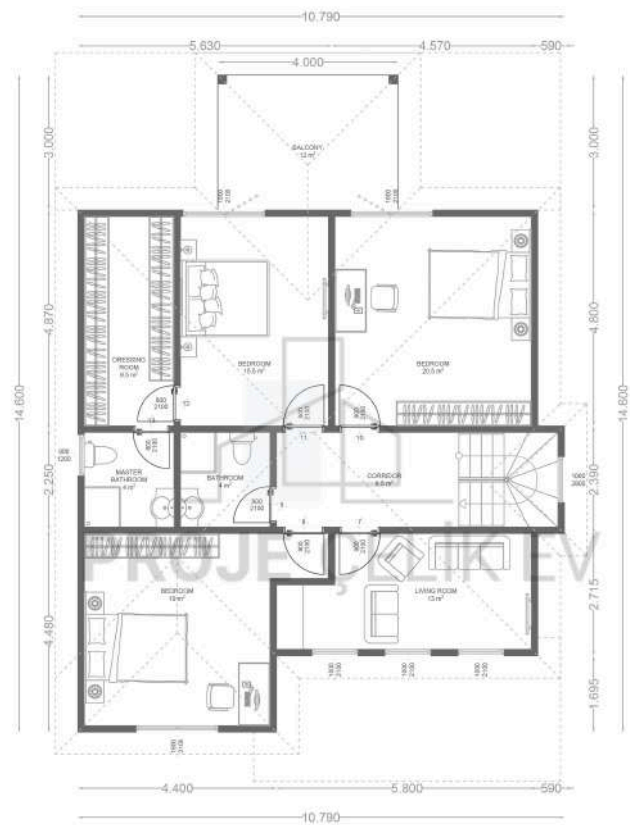


SAMSUN



116

276 m² Duplex
Steel Villa Projects



ANKARA



118

323 m² Duplex
Steel Villa Projects

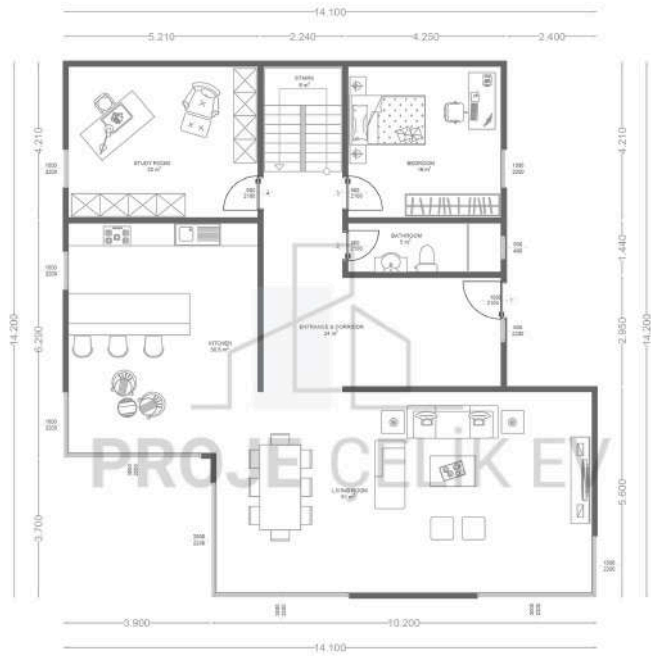


ANTALYA



120

330 m² Duplex
Steel Villa Projects

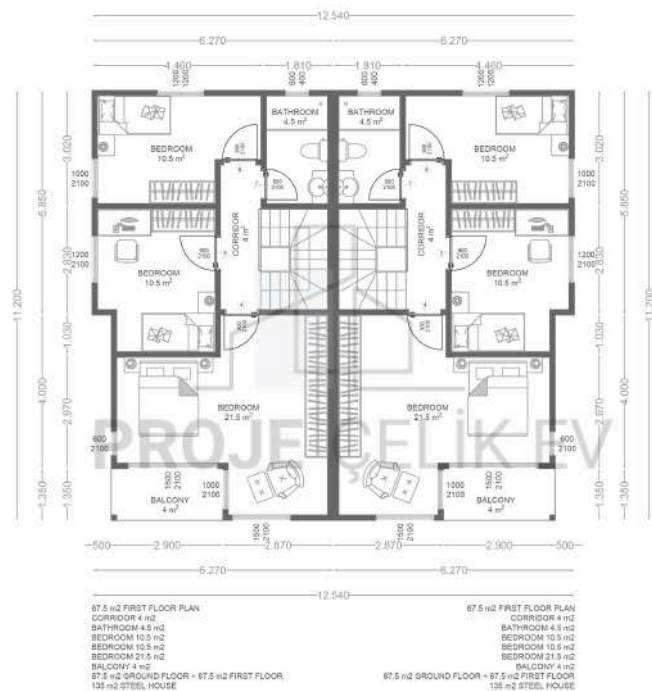
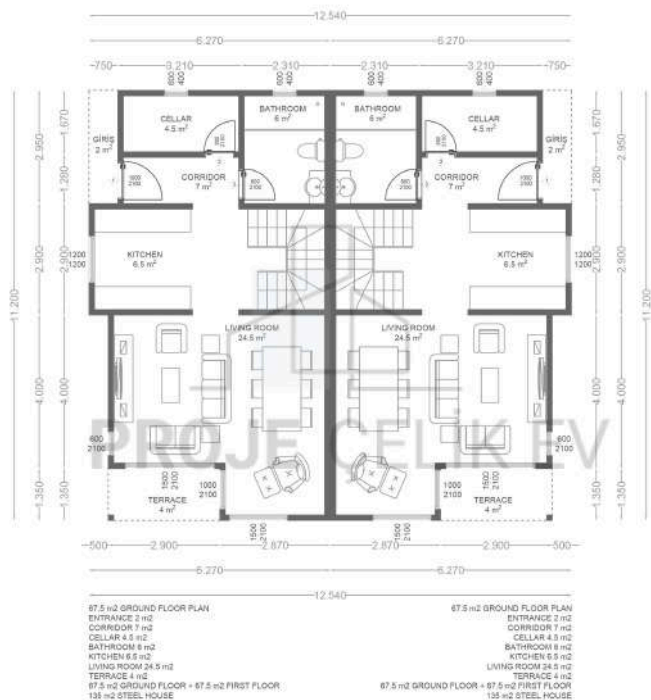


MANİSA



122

135 m²+135 m²
Steel Twin Villa Project

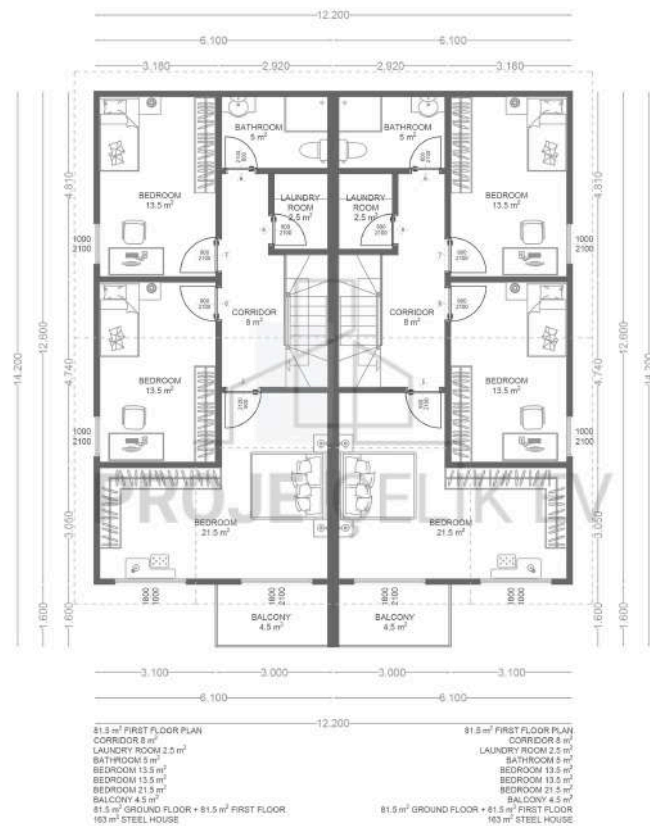
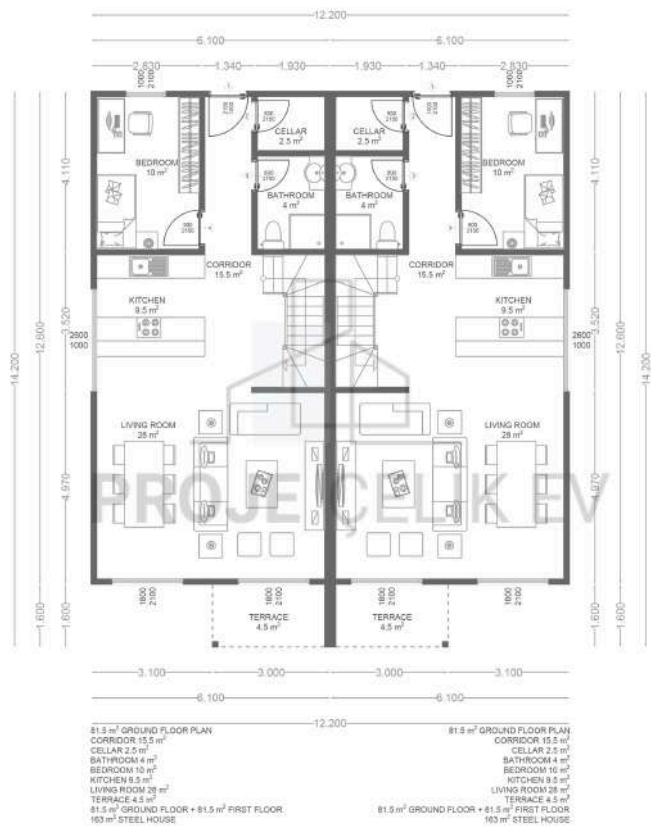


MERSİN



124

163 m²+163 m²
Steel Twin Villa Project

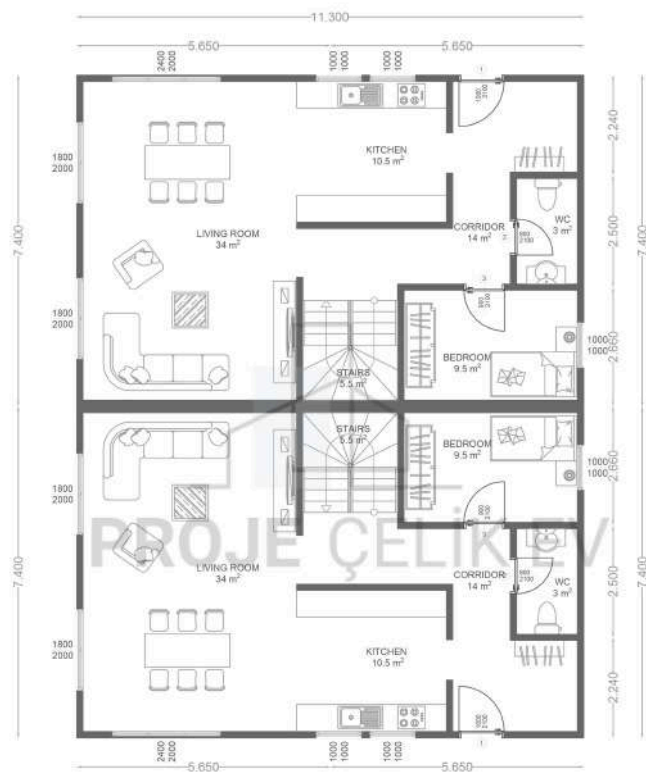


İSTANBUL



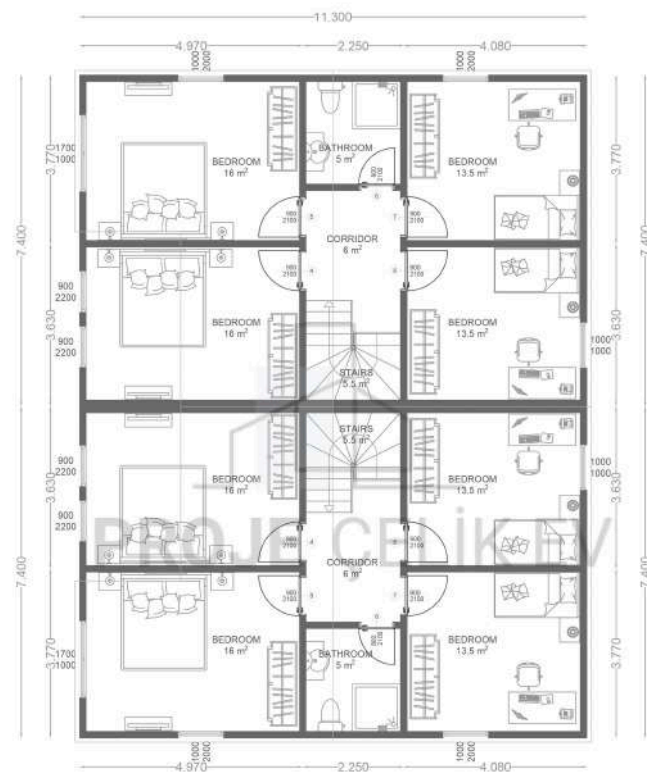
126

167 m²+167 m²
Steel Twin Villa Project



83.5 m² GROUND FLOOR PLAN
CORRIDOR 14 m²
KITCHEN 10.5 m²
LIVING ROOM 34 m²
BEDROOM 9.5 m²
WC 3 m²
STAIRS 5.5 m²
83.5 m² GROUND FLOOR + 83.5 m² FIRST FLOOR
167 m² STEEL HOUSE

83.5 m² GROUND FLOOR PLAN
CORRIDOR 14 m²
KITCHEN 10.5 m²
LIVING ROOM 34 m²
BEDROOM 9.5 m²
WC 3 m²
STAIRS 5.5 m²
83.5 m² GROUND FLOOR + 83.5 m² FIRST FLOOR
167 m² STEEL HOUSE



83.5 m² FIRST FLOOR
CORRIDOR 6 m²
BEDROOM 13.5 m²
BEDROOM 13.5 m²
BEDROOM 16 m²
BEDROOM 16 m²
BATHROOM 5 m²
STAIRS 5.5 m²
83.5 m² GROUND FLOOR + 83.5 m² FIRST FLOOR
167 m² STEEL HOUSE

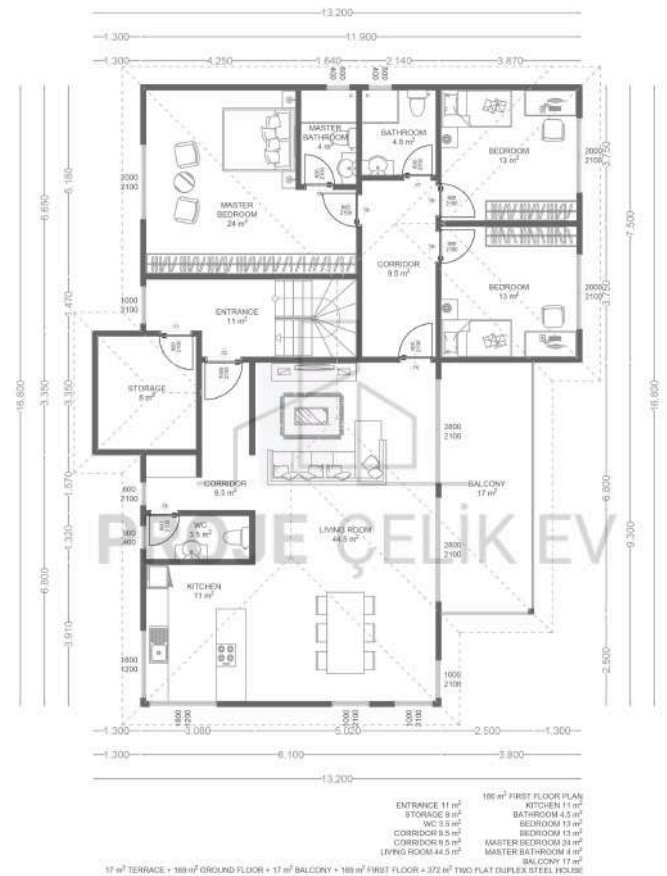
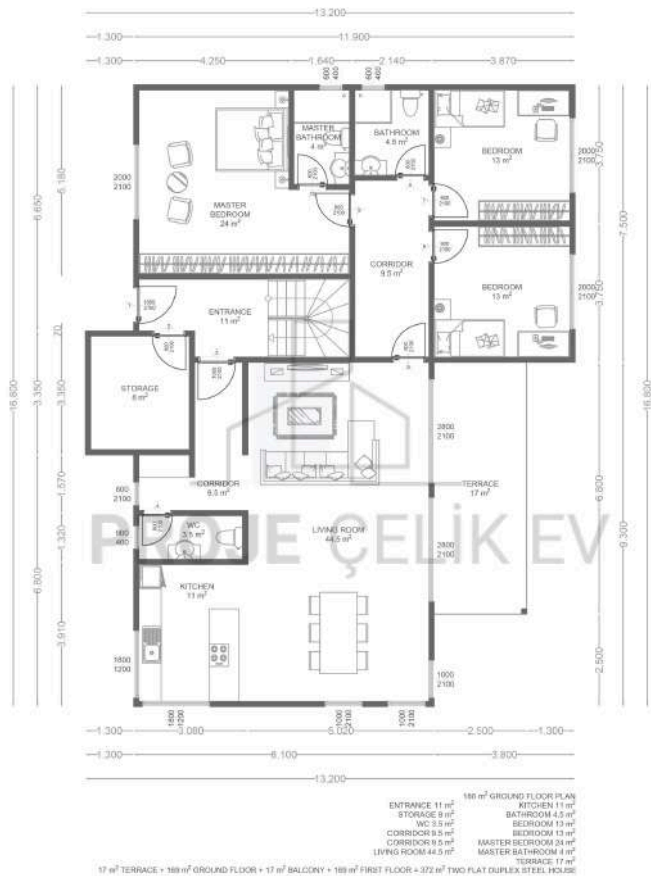
83.5 m² FIRST FLOOR
CORRIDOR 6 m²
BEDROOM 13.5 m²
BEDROOM 13.5 m²
BEDROOM 16 m²
BEDROOM 16 m²
BATHROOM 5 m²
STAIRS 5.5 m²
83.5 m² GROUND FLOOR + 83.5 m² FIRST FLOOR
167 m² STEEL HOUSE

AĞRI



128

186 m²+186 m²
Steel Twin Villa Project

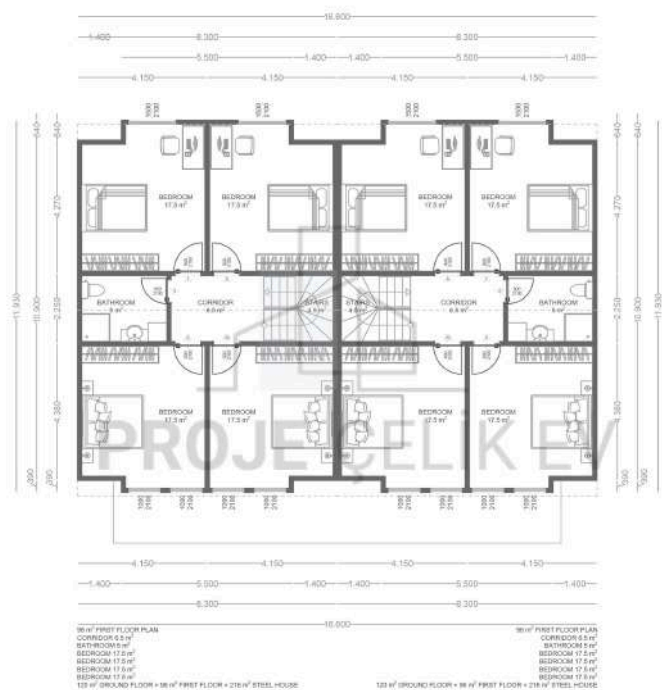
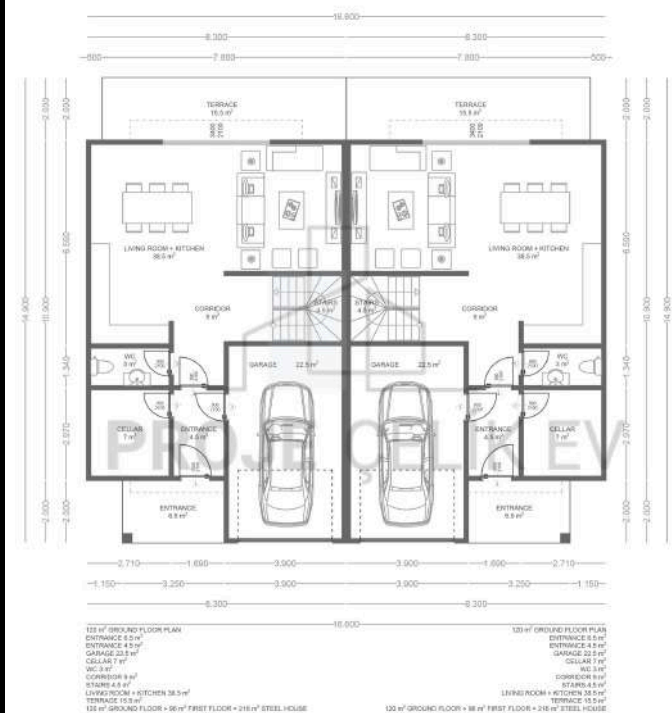


TRABZON



130

216 m²+216 m²
Steel Twin Villa Project



ERZURUM



132

233 m²+233 m²
Steel Twin Villa Project

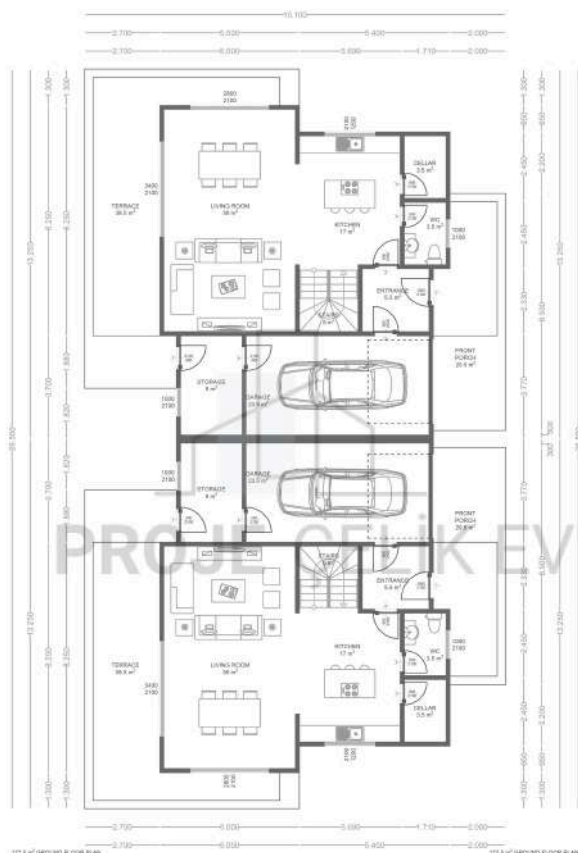


NEVŞEHİR



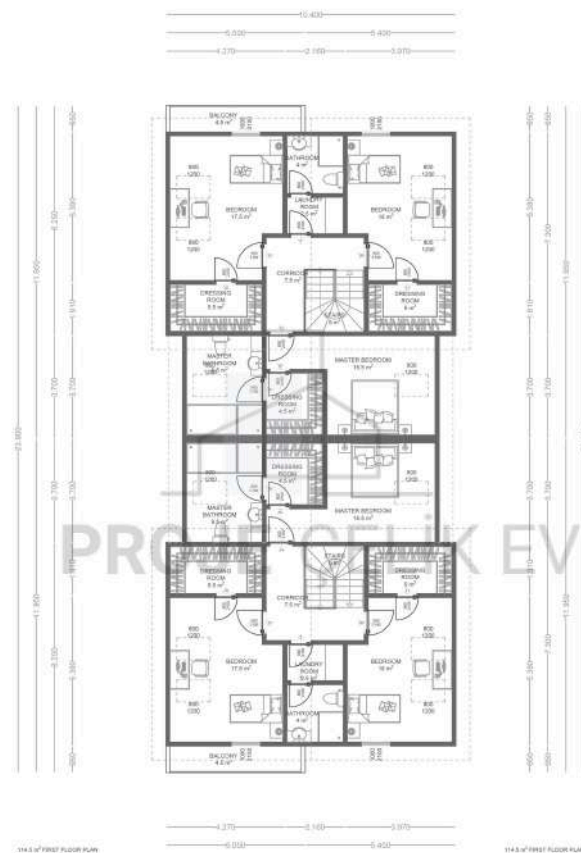
134

287 m²+287 m²
Steel Twin Villa Project



173.5 m² GROUND FLOOR PLAN
 FRONT PORCH 21.5 m²
 ENTRANCE 5.5 m²
 WC 3.5 m²
 CLOSET 1.5 m²
 KITCHEN 17 m²
 LIVING ROOM 36 m²
 STORAGE 8 m²
 GARAGE 23.5 m²
 TERRACE 36.5 m²

173.5 m² GROUND FLOOR + 14.2 m² FIRST FLOOR = 287 m² STEEL HOUSE



173.5 m² GROUND FLOOR PLAN
 FRONT PORCH 21.5 m²
 ENTRANCE 5.5 m²
 WC 3.5 m²
 CLOSET 1.5 m²
 KITCHEN 17 m²
 LIVING ROOM 36 m²
 STORAGE 8 m²
 GARAGE 23.5 m²
 TERRACE 36.5 m²

173.5 m² GROUND FLOOR + 14.2 m² FIRST FLOOR = 287 m² STEEL HOUSE

TEK KATLI
Çelik Villa Projelerimiz

SINGLE-STORY
Steel Villa Projects

TEK MƏRTƏVƏLİ

Dəmir Villa Layihələrimiz

Наши проекты

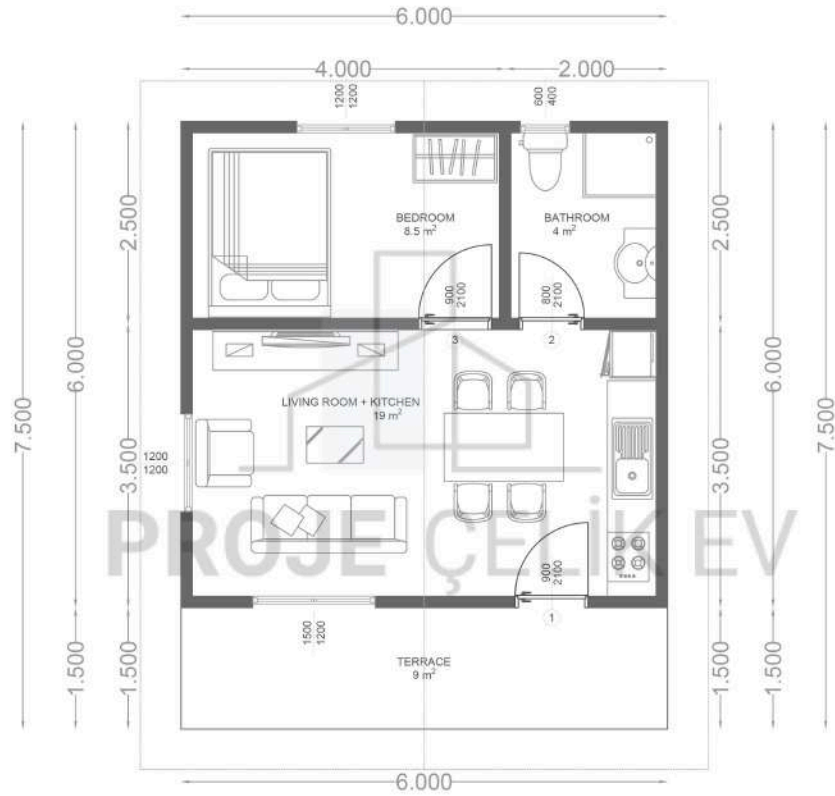
одноэтажных стальных вилл

BARTIN



138

45 m² Single-Story
Steel Villa Project



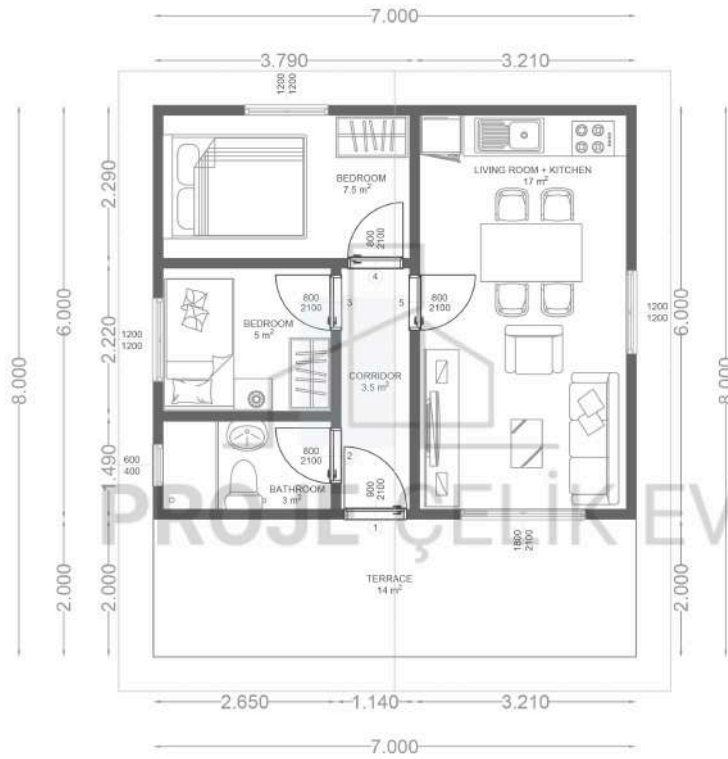
45 m² STEEL HOUSE
 BEDROOM 8.5 m²
 BATHROOM 4 m²
 LIVING ROOM + KITCHEN 19 m²
 TERRACE 9 m²

SİVAS



140

56 m² Single-Story
Steel Villa Project



56 m² STEEL HOUSE
 CORRIDOR 3.5 m²
 BEDROOM 7.5 m²
 BEDROOM 5 m²
 BATHROOM 3 m²
 LIVING ROOM + KITCHEN 17 m²
 TERRACE 14 m²

ISPARTA



142

80 m² Single-Story
Steel Villa Project



4 m² TERRACE + 76 m² + 80 m² STEEL HOUSE
 CORRIDOR 8.5 m²
 BEDROOM 10 m²
 BEDROOM 12 m²
 BATHROOM 4.5 m²
 LIVING ROOM 18.5 m²
 KITCHEN 14.5 m²

YALOVA



144

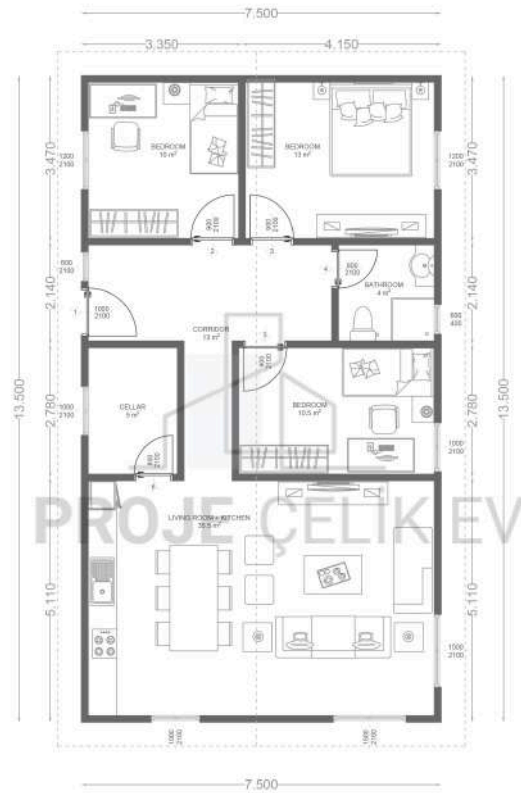
91.5 m² Single-Story
Steel Villa Project

KÜTAHYA



146

101 m² Single-Story
Steel Villa Project

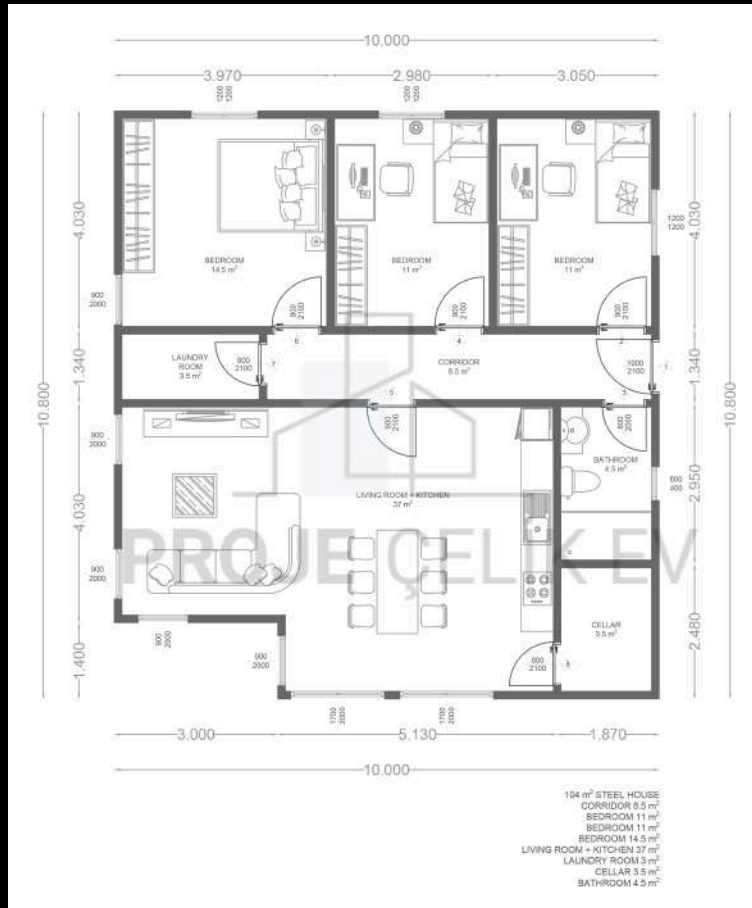


UŞAK



148

104 m² Single-Story
Steel Villa Project



KİLİS



150

108 m² Single-Story
Steel Villa Project



DENİZLİ



152

111 m² Single-Story
Steel Villa Project



BALIKESİR



154

114 m² Single-Story
Steel Villa Project



DÜZCE



156

115 m² Single-Story
Steel Villa Project



TOKAT



158

120 m² Single-Story
Steel Villa Project

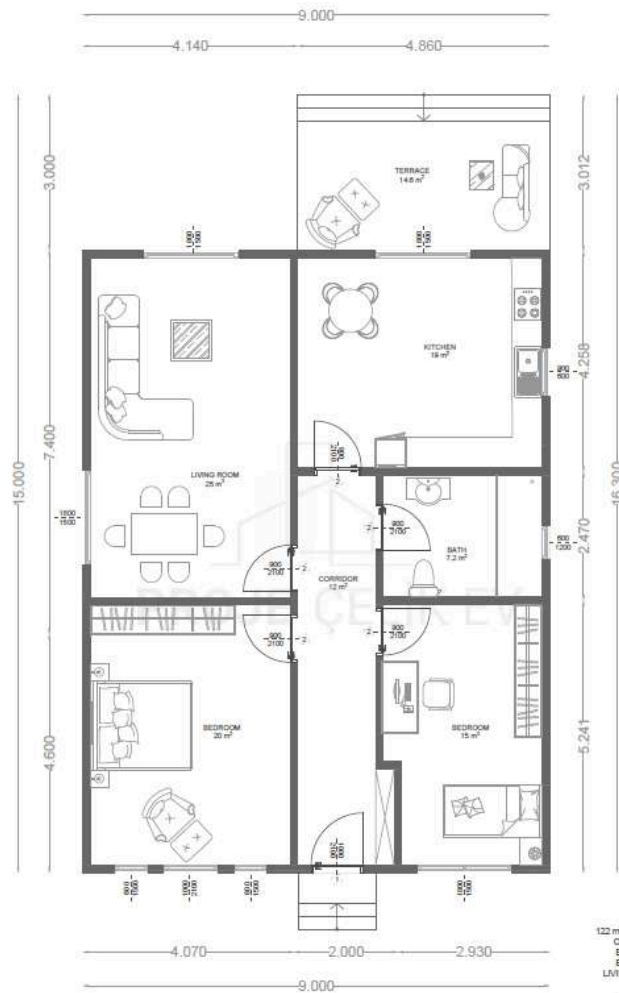


KARAMAN



160

122 m² Single-Story
Steel Villa Project



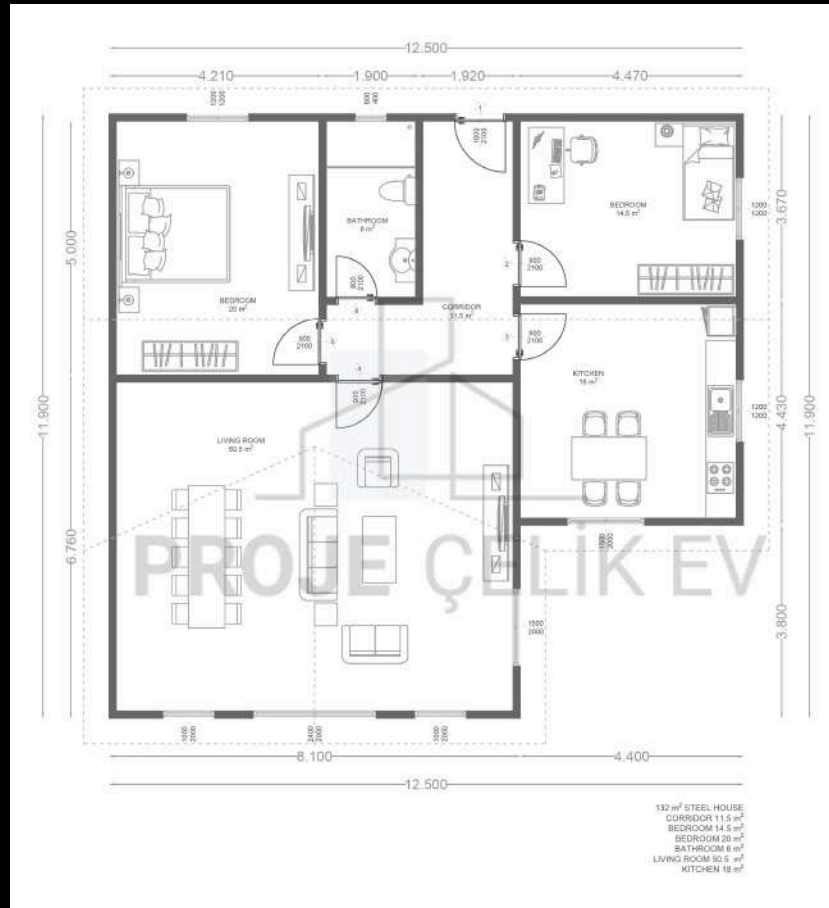
122 m² STEEL HOUSE
 CORRIDOR 12 m²
 BEDROOM 20 m²
 BEDROOM 15 m²
 LIVING ROOM 25 m²
 KITCHEN 15 m²
 BATH 7.2 m²
 TERRACE 14.6 m²

RiZE



162

132 m² Single-Story
Steel Villa Project



KOCAELİ



164

139.5 m² Single-Story
Steel Villa Project



SAKARYA



166

149.5 m² Single-Story
Steel Villa Project



IĞDIR



168

153 m² Single-Story
Steel Villa Project



BİLECİK



170

155 m² Single-Story
Steel Villa Project



KIRKLARELİ



172

155 m² Single-Story
Steel Villa Project

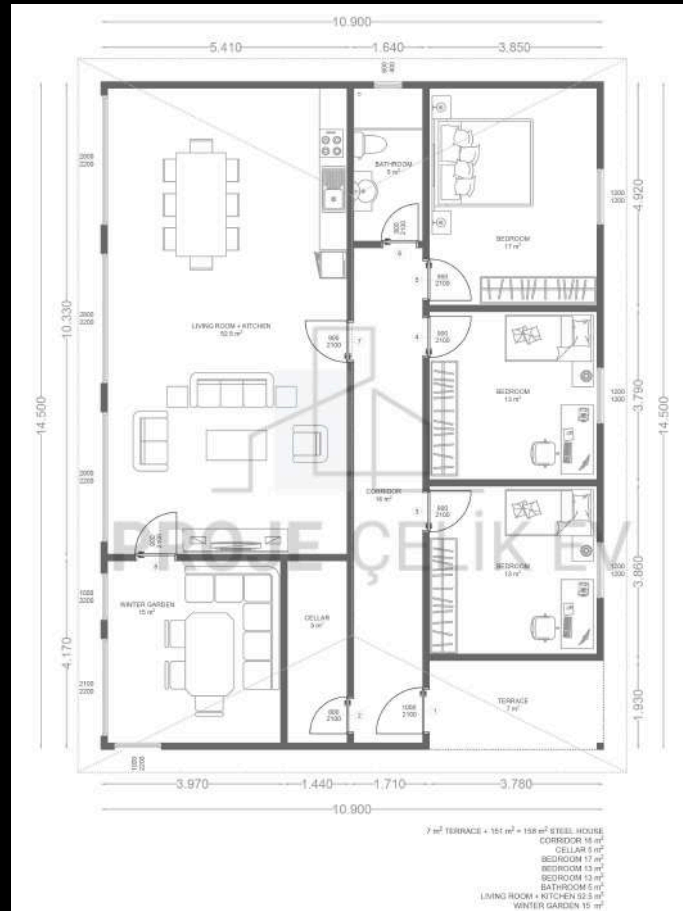


KIRIKKALE



174

158 m² Single-Story
Steel Villa Project



AMASYA



176

158.5 m² Single-Story
Steel Villa Project



HATAY



178

160.5 m² Single-Story
Steel Villa Project



100.8 m² TERRACE + 100.8 m² STEEL HOUSE
 CORRIDOR 10.0 m²
 BEDROOM 12.0 m²
 BEDROOM 12.0 m²
 BEDROOM 12.0 m²
 BEDROOM 12.0 m²
 LIVING ROOM 20.1 m²
 KITCHEN 31.5 m²

KONYA



180

163 m² Single-Story
Steel Villa Project

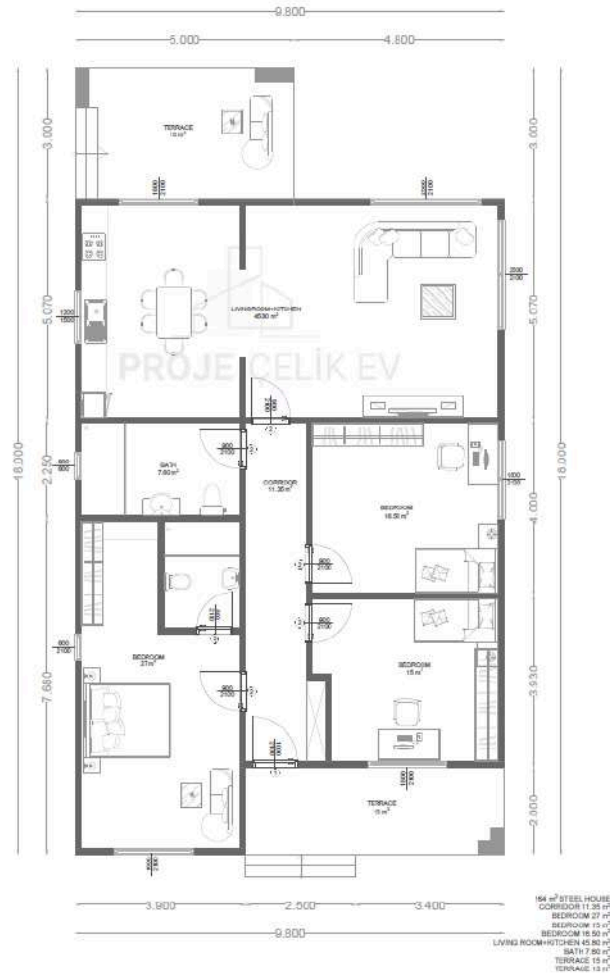


ZONGULDAK



182

164 m² Single-Story
Steel Villa Project



TILE PATTERNED GALVANIZED TRAPEZE SHEET METAL

VAPOUR BARRIER MEMBRANE

OSB - 11 mm

PIMAPEN-7000-4/16/4-DOUBLE GLAZING

PLASTERBOARD - 12.5 mm

OSB - 10 mm

ROCK WOOL - 5

OSB - 10 mm

GREEN PLASTERBOARD - 12.5 mm

CERAMIC

PLASTER

NET

BOARDEX - 12.5 mm

VAPOUR BARRIER MEMBRANE

OSB - 10 mm

ROCK WOOL - 50 DAN

OSB - 10 mm

PLASTERBOARD - 12.5 mm

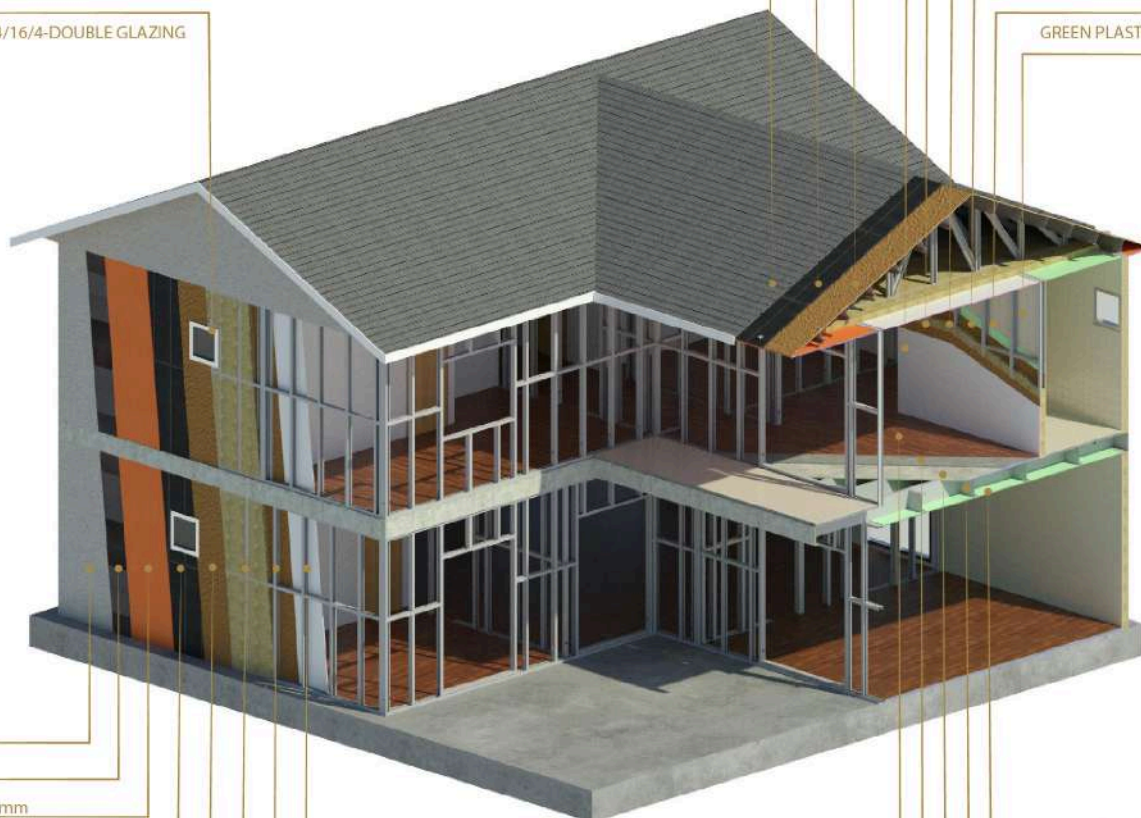
PLASTERBOARD - 12.5 mm

GALVANIZED MEZZANINE CARCASS

FIBERCEMENT

SCREED

PARQUET - 8 mm



EXTERIOR WALLS

All external facades and all steel structural elements in the eaves are covered in such a way that they are concealed within the walls. This prevents thermal bridges and provides fire protection.

EXTERNAL WALL SECTION: (From outside to inside, respectively) 12.5 mm BOARDX + MOISTURE BARRIER + 10 mm OSB + 90 mm LIGHT STEEL FILLED WITH ROCK WOOL

External wall steel thickness: 1.2 mm
External wall finished thickness: 14 cm
Height: 2.8000 mm

INTERIOR WALLS

Joint areas are covered with special tape and finishing materials to achieve perfectly smooth surfaces.

INTERNAL WALL SECTION: (From inside to outside, respectively) 90 mm LIGHT STEEL FILLED WITH ROCK WOOL + 10 mm OSB + 12.5 mm DRYWALL

Internal wall steel thickness: 1.2 mm
Internal wall finished thickness: 14 cm
Height: 2.8000 mm

MEZZANINE

In the intermediate floor, 16 mm cement-bonded particleboard is applied on top of the steel floor joists. 80 mm Knauf Mineral Plus IP037 is placed between the galvanized steel system.

ROOF

*50 mm CORRUGATED SHEET + MOISTURE BARRIER + 11 mm OSB
Roof truss steel thickness: 1.0 mm
50 DAN / 5 m² of 100 mm ROCK WOOL is laid under the roof.
The roof pitch is determined by the climate characteristics of the region, starting from 20% to 30%, using either Gable or Hip roof systems."

TRUSS STRUCTURE

It is made of cold-formed galvanized sheet metal with bolt and nut connections.

DOORS

EXTERNAL DOOR

The external door measures 100*210 cm and is a steel door. Cylindrical TSE-certified locks are used in external doors. (Custom project changes may be made based on client preferences.)

INTERNAL DOORS

Internal doors measure 90*210 cm and are made of either membrane or wooden doors. Aluminum and PVC doors are optional based on customer preferences. Internal doors use flush TSE-certified locks.

CEILINGS

"Gypsum board with a thickness of 12.5 mm is applied over the steel floor joists, followed by plastering and painting.
Ceiling steel thickness: 0.8 mm"

WINDOWS - FRAMES AND GLASS

White PVC windows with TSE certification are used. Upon request, aluminum frames or different colored and textured PVC frame windows can be applied. All the glass used is double-glazed, with a thickness of 4+16+4 mm. The brands used are Firatpen or Pimapen.

ELECTRICAL INSTALLATION

The electrical installation is routed through the carcass and laid under plaster. All materials used in the installation are TSE-certified. The installation of meters, grounding rods, lighting fixtures, and external building connections is done by the client. As is well known, 80% of the fires that occur in our country are caused by electrical installations. Therefore, FE180-resistant electrical panels are used. Circuit breakers are from Siemens, Schneider, and ABB. The installation pipes are also FE180-resistant.

PLUMBING

It is applied under plaster. Clean water pipes are PPRC, and wastewater pipes are PVC, all TSE-certified products. The installation of water meters and external building connections is done by the client.

FOUNDATION AND CONCRETE

Arenol Group Yapı Anonim Şirketi will pour the concrete foundation according to the provided concrete plan (foundation dimensions). In our turnkey projects, the concrete foundation will be 50 cm high and will be installed by us. The client is responsible for the soil survey. The building will be anchored to the foundation with anchor bolts and steel dowels. All excavation work is the client's responsibility.

FLOORING AND CERAMIC MATERIAL

Flooring is 8mm laminate by Kastamonu Entegre's Floorpan. The color of the flooring will be chosen by the client. Materials and workmanship are delivered by Arenol.

The client will choose from predetermined products provided by Arenol, and the materials and workmanship will be delivered as a complete package. The brands used for ceramics are Seramiksan or Çanakkale Seramik.

PAINT

Exterior metal surfaces are painted with two coats of primer and two coats of synthetic enamel paint. Exterior wall panels are painted with acrylic exterior paint after installation. Sealant is applied to external wall joints. TSE-certified paint products are used in our structures.

Interior surfaces, including ceiling gypsum boards and wall panels, are painted with plastic paint. TSE-certified paint products are used in our structures.

**TINY HOUSE VE KAFE
KONTEYNER**

**TINY HOUSE AND CAFE
CONTAINER**

**TİNİ EV VƏ KAFE
KONTEYNERİ**

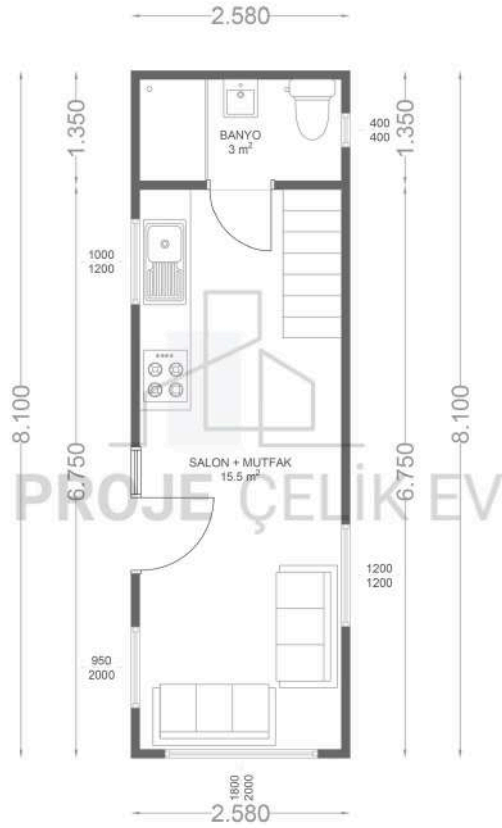
**ТИНИ-ХАУС И КОНТЕЙНЕР
КАФЕ**

LAÇIN 1

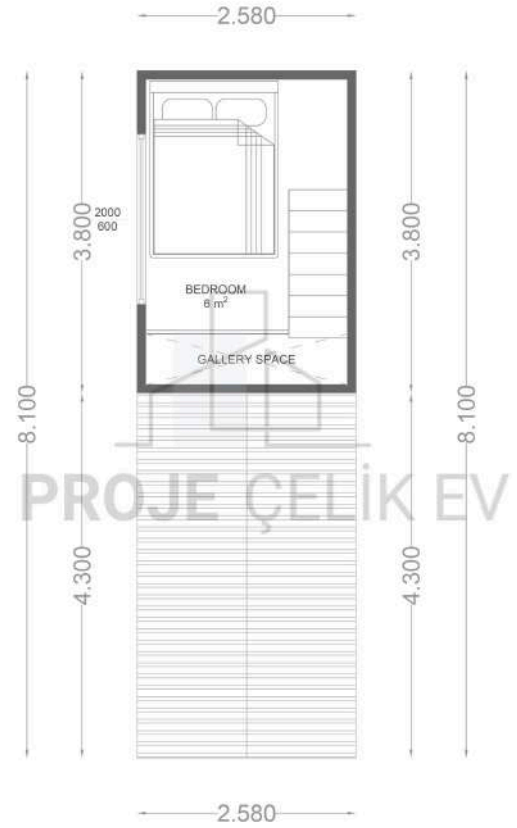


188

TINY HOUSE



TINY HOUSE GİRİŞ KAT PLANI



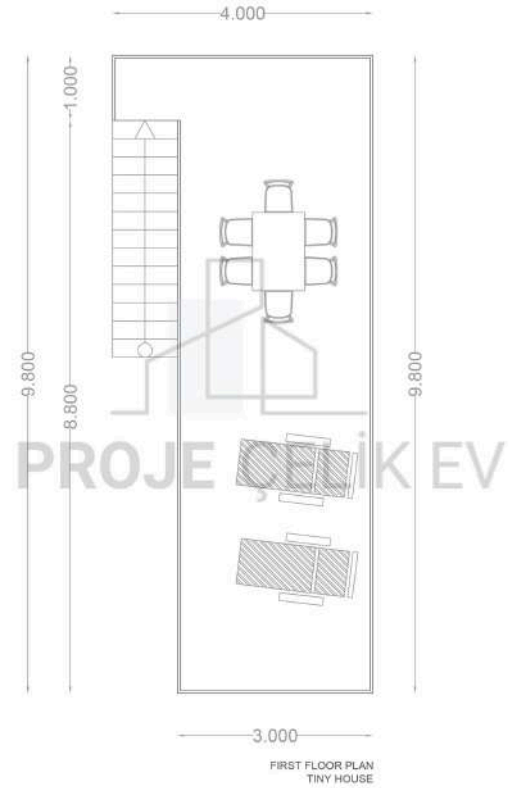
TINY HOUSE FIRST FLOOR PLAN

LAÇIN 2



190

TINY HOUSE



LAÇIN 3



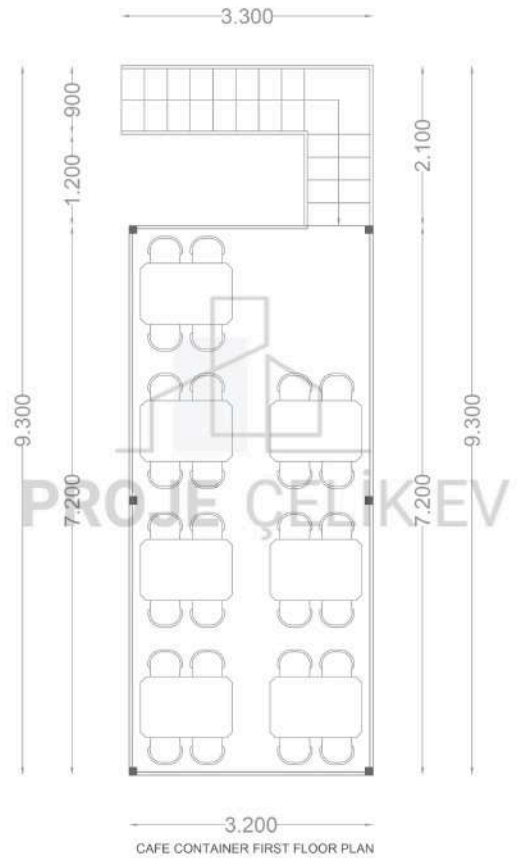
192

TINY HOUSE



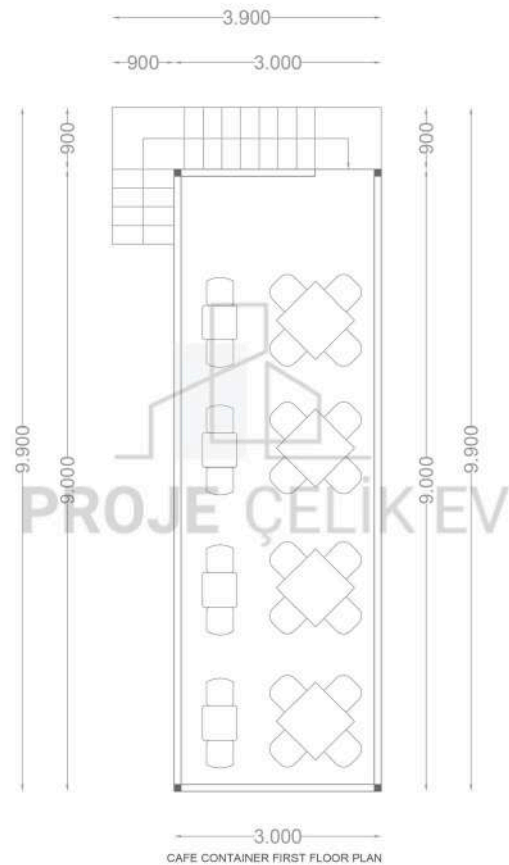
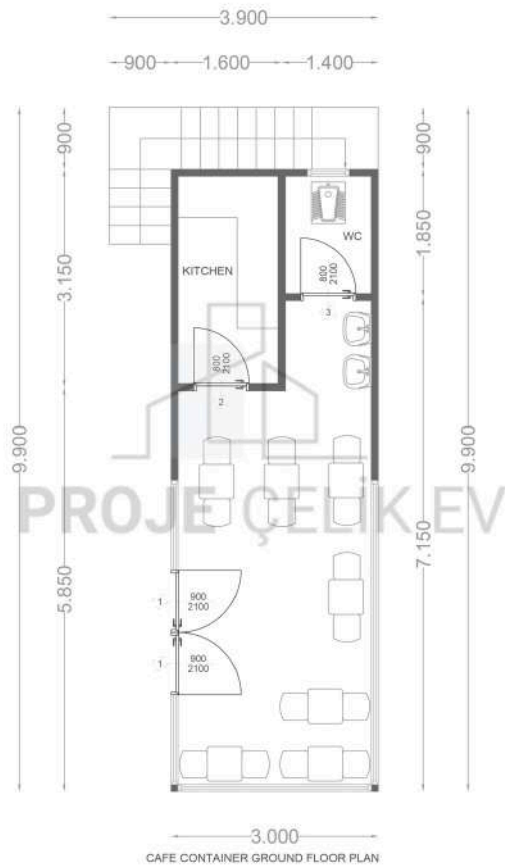
CAFE CONTAINER 1





CAFE CONTAINER 2





ŞANTİYE
BİNALARI/KONTEYNER/KABİN
Projelerimiz

CONSTRUCTION SITE BUILDINGS/
CONTAINER/CABIN
Projects

**İNŞAAT SAHƏSİ BİNALARI/
KONTEYNER/KABİN**

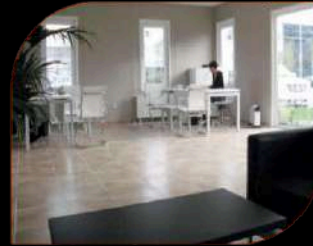
Layihələrımız

**ШАНТИҢ БИНАЛАРЫ /
КОНТЕЙНЕР / КАБИН
ПРОЕКТЛЕРИМИЗ**



200

PREFABRICATED SITE



PREFABRICATED SITE

201



202

PREFABRICATED SITE



PREFABRICATED HOUSE

203



204

PREFABRICATED HOUSE



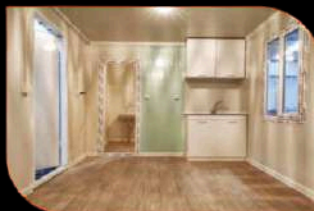
CONTAINER SITE

205



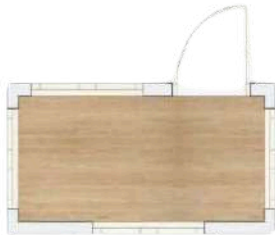
206

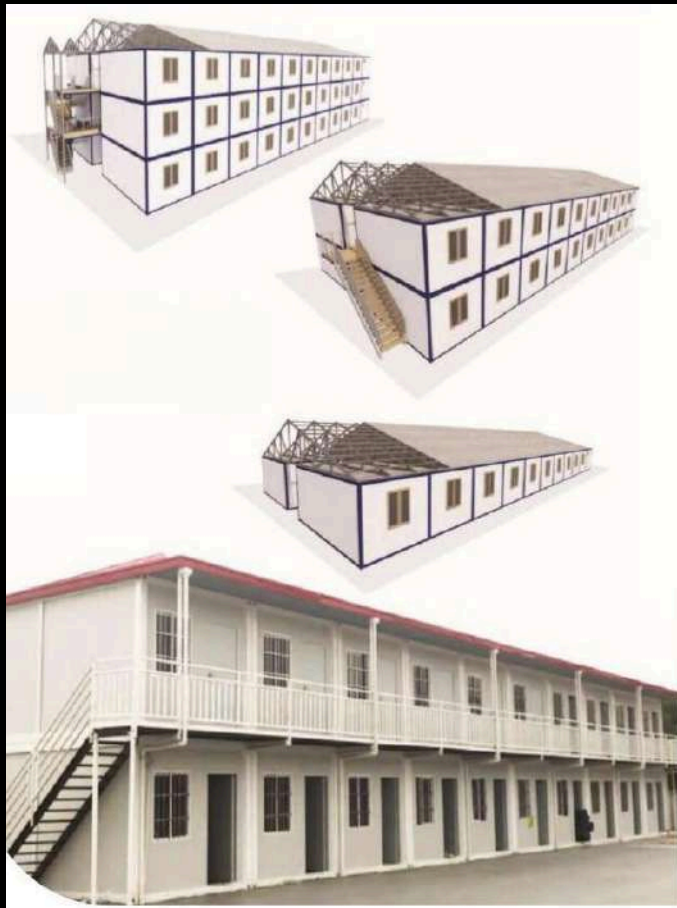
CONTAINER SITE



CONTAINER SITE

207





CONTAINER SITE

209



SH001



SH002



SH003



SH004



SH005



SH006



SH007



SH008



SH009



SH010



210

CONTAINER SITE



SH011



SH012



SH013



SH014



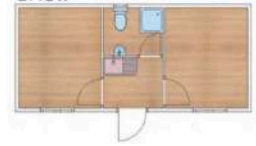
SH015



SH016



SH017



SH018



SH019



SH020



CONTAINER SITE

STYLE PANEL Sandwich Wall Panel
Oven Painted Sheet Polystyrene Foam
(EPS, provides sound and heat insulation.)

STYLE PANEL Sandwich Roof Panel

Carrying Eyebolt

PVC Glass
Double Glazed, With Frame

Panel Door
Press Sheet Metal and Sandwich

2-2.5 mm Thickness PVC Mineflo

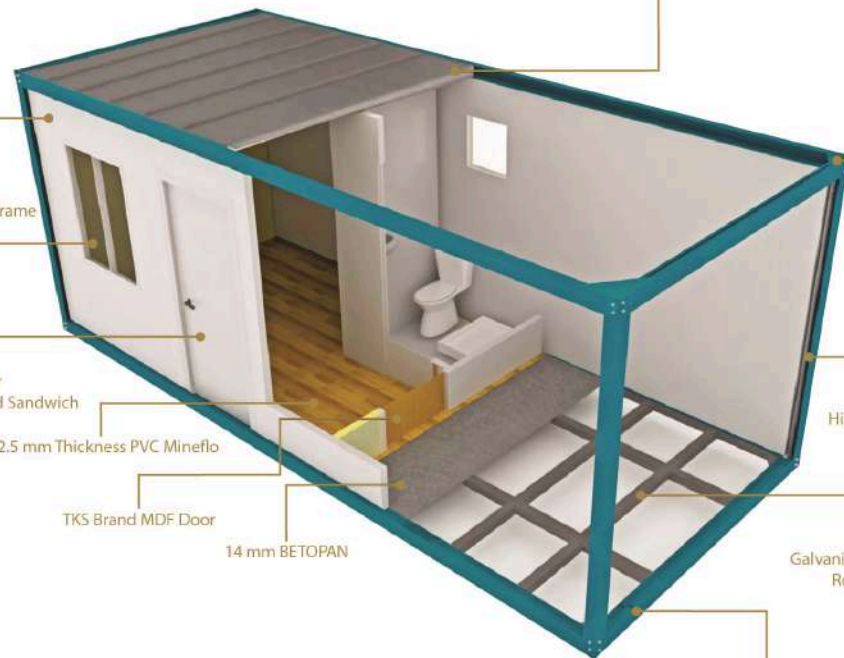
TKS Brand MDF Door

14 mm BETOPAN

Hidden Gutter System

Galvanized C Profile Specially
Rolled in Rollform

Manufactured from Specially
Shaped Sheet Metal



An aerial, isometric-style rendering of a modern urban development. The scene features several tall, multi-story apartment buildings with light-colored facades and flat roofs. These buildings are arranged around a central green space that includes a park area with trees, a winding path, and a small body of water or pool. The overall color palette is muted, with greys, blues, and greens. The text "OUR OTHER PROJECTS" is overlaid in the center in a bold, white, sans-serif font.

OUR OTHER PROJECTS

The Nuvo Dragos project attracts attention with its heights of 3.50 and 3.15 meters, as well as its viewing terraces offering views of the sea and islands.





Park Maveria II is a project implemented in Başakşehir Kayaşehir, consisting of 556 residences and 252 commercial units.



PARK MAVERIA II-BAŞAKŞEHİR

215



216

ARK RESIDENCE-BAĞCILAR



IST MARİNA-KARTAL

217



218

GALATAPORT-BEYOĞLU



REHABILITATION CENTER-ÇANAKKALE 219



220

TASHKENT CITY-UZBEKISTAN



OLMOZOR CITY-UZBEKISTAN

221



222 LAÇIN HOTEL-AZERBAIJAN

Yenidoğan Mh. Uluyol Cd. Kilim Grup İş Merkezi
BAYRAMPAŞA/İSTANBUL

Fabrika: Tekirdağ, Çorlu Yolu Üzeri
592 / 6 Veliköy / ÇERKEZKÖY-TÜRKİYE

0(212) 803 70 86

0(533) 078 30 86

 projecelikev

 projecelikev.com

